

Research article

Open Access

Halibut mitochondrial genomes contain extensive heteroplasmic tandem repeat arrays involved in DNA recombination

Kenneth A Mjelle^{†1}, Bård O Karlsen^{†1}, Tor E Jørgensen¹, Truls Moum¹ and Steinar D Johansen^{*1,2}

Address: ¹Department of Fisheries and Natural Sciences, Bodø University College, N-8049 Bodø, Norway and ²Department of Molecular Biotechnology, Institute of Medical Biology, University of Tromsø, N-9037 Tromsø, Norway

Email: Kenneth A Mjelle - kenmjelle@hotmail.com; Bård O Karlsen - baard.ove.karlsen@hibo.no;

Tor E Jørgensen - Tor.Erik.Joergensen@hibo.no; Truls Moum - Truls.Moum@hibo.no; Steinar D Johansen* - Steinar.Johansen@fagmed.uit.no

* Corresponding author †Equal contributors

Published: 11 January 2008

Received: 6 July 2007

BMC Genomics 2008, 9:10 doi:10.1186/1471-2164-9-10

Accepted: 11 January 2008

This article is available from: <http://www.biomedcentral.com/1471-2164/9/10>

© 2008 Mjelle et al; licensee BioMed Central Ltd.

This is an Open Access article distributed under the terms of the Creative Commons Attribution License (<http://creativecommons.org/licenses/by/2.0>), which permits unrestricted use, distribution, and reproduction in any medium, provided the original work is properly cited.

Abstract

Background: Halibuts are commercially important flatfish species confined to the North Pacific and North Atlantic Oceans. We have determined the complete mitochondrial genome sequences of four specimens each of Atlantic halibut (*Hippoglossus hippoglossus*), Pacific halibut (*Hippoglossus stenolepis*) and Greenland halibut (*Reinhardtius hippoglossoides*), and assessed the nucleotide variability within and between species.

Results: About 100 variable positions were identified within the four specimens in each halibut species, with the control regions as the most variable parts of the genomes (10 times that of the mitochondrial ribosomal DNA). Due to tandem repeat arrays, the control regions have unusually large sizes compared to most vertebrate mtDNAs. The arrays are highly heteroplasmic in size and consist mainly of different variants of a 61-bp motif. Halibut mitochondrial genomes lacking arrays were also detected.

Conclusion: The complexity, distribution, and biological role of the heteroplasmic tandem repeat arrays in halibut mitochondrial control regions are discussed. We conclude that the most plausible explanation for array maintenance includes both the slipped-strand mispairing and DNA recombination mechanisms.

Background

Halibuts (family Pleuronectidae) represent the largest of the flatfish species. Whereas Atlantic halibut (*Hippoglossus hippoglossus*) and Pacific halibut (*Hippoglossus stenolepis*) are endemic species confined to the North Atlantic and North Pacific Oceans, respectively, the Greenland halibut (*Reinhardtius hippoglossoides*) has an Arctic-boreal distribution in both the Atlantic and Pacific Oceans. All three species are commercially important flatfishes with extensive

annual catch volumes, and the Atlantic halibut has further become increasingly popular in North European aquaculture [1]. Phylogenetic analysis based on partial mitochondrial DNA (mtDNA) sequences supports a sister taxa affiliation of the *Hippoglossus* and *Reinhardtius* halibuts among the Pleuronectidae [2].

Genetic markers have been developed to investigate and assess genetic issues within e.g. taxonomy, systematics,

Table 1: Key features of halibut specimens and complete mtDNA sequences

Name	Specimen	Location	Size (bp)	Acc. no.
<i>Hippoglossus hippoglossus</i> (Atlantic halibut)	Hh-1	Northern Norway, hatchery (Bodø)	17546	AM749122
<i>H. hippoglossus</i>	Hh-2	Northern Norway, hatchery (Bodø)	17619	AM749123
<i>H. hippoglossus</i>	Hh-3	Northern Norway, wild (Bodø)	17973	AM749124
<i>H. hippoglossus</i>	Hh-4	Southern Norway, aquarium (Risør)	17729	AM749125
<i>H. stenolepis</i> (Pacific halibut)	Hs-1	Alaska, wild (Cook Inlet)	17841	AM749126
<i>H. stenolepis</i>	Hs-2	Canada, wild (Hecate Strait)	17841	AM749127
<i>H. stenolepis</i>	Hs-3	Canada, wild (Hecate Strait)	17963	AM749128
<i>H. stenolepis</i>	Hs-4	Canada, wild (Hecate Strait)	17902	AM749129
<i>Reinhardtius hippoglossoides</i> (Greenland halibut)	Rh-1	Northern Norway, wild (Røst)	18017	AM749130
<i>R. hippoglossoides</i>	Rh-2	Northern Norway, wild (Røst)	18139	AM749131
<i>R. hippoglossoides</i>	Rh-3	Northern Norway, wild (Røst)	17895	AM749132
<i>R. hippoglossoides</i>	Rh-4	Northern Norway, wild (Røst)	18078	AM749133
<i>Verasper variegatus</i> (Spotted halibut)			17273	DQ403797
<i>V. moseri</i> (Barfin flounder)			17588	EF025506

and 45.1% for Atlantic-, Pacific, and Greenland halibuts, respectively. These values are similar to most sequenced bony fish mitochondrial genomes. Furthermore, the codon usage was found to be very similar among the three halibut species investigated and with general discrimination against G at the third nucleotide position.

The mitochondrial control regions contain heteroplasmic tandem repeat arrays

Intergenic regions are practically lacking in halibut mtDNAs, except for the short spacer between the tRNA-Asn and tRNA-Cys genes that contains the origin of light-strand (oriL) replication, and the major CR (contains the D-loop) located between the tRNA-Pro and tRNA-Phe genes (Figure 1). Whereas the former region is completely conserved in sequence between the 12 analysed halibut specimens, the latter is more variable and contains control elements like the origin of heavy-strand (oriH) replication and the transcriptional promoters.

A schematic presentation of the CR organization is shown in Figure 2A. All specimens contain extensive direct repeat arrays located between the conserved sequence box (CSB) 3 and the tRNA-Phe gene. These arrays were similar among the halibut species investigated, and consist of a free-standing 11-bp motif flanking each side of the array as well as variable numbers of a 61-bp motif in between. In Atlantic halibut the investigated specimens Hh-1, Hh-2, Hh-3, and Hh-4 contain 12, 13, 19, and 15 copies, respectively, of the 61-bp motif in a plasmid cloned representative of the CRs (Figure 2B). Interestingly, eight different variants of the 61-bp motifs were identified (HTR motifs I to VIII) with a distinct, but scattered distribution pattern within and between specimens (Figure 2B). Similar patterns and distributions were observed both for the Pacific halibut (17–19 HTR copies; Figure 2C) and Green-

land halibut (17–21 HTR copies; Figure 2D), but with less complexity compared to the Atlantic halibut.

A PCR-amplification and DNA sequencing approach was included to assess the heteroplasmic patterns of the HTR-motif arrays. The HTR region and some flanking sequences were amplified from DNA isolated from all 12 specimens (Figure 3A) and subsequently separated by agarose electrophoresis (Figure 3B). Extensive heteroplasmic features were observed for all 12 specimens, with the most common copy numbers of the 61-bp repeat of about 15–20. The four smallest amplified fragments (named **a-d** in Figure 3B) from one specimen of Atlantic halibut (Hh-2) were eluted from the gel, cloned into a plasmid vector, and subsequently DNA sequenced. The results are summarized in Figure 3C and confirm that the fragments present in the agarose gel as ladder patterns differs in size by one 61-bp motif. Surprisingly, the smallest fragment (fragment **d**) lacks a complete 61-bp motif and only contains a few copies of the free-standing 11-bp motif.

Distribution of sequence variation within the halibut mitochondrial genomes

Nucleotide substitutions and deletions were assessed by comparing the complete mtDNA sequence of the 4 specimens of each halibut species. The total numbers of variable sites identified were 105, 103, and 119 in Atlantic-, Pacific-, and Greenland halibuts, respectively. The variable sites include all protein coding and ribosomal RNA genes, the CR, and nine of the 22 transfer RNA genes (Figure 4). Transition substitutions at third codon positions of protein coding genes were the most common changes, and nucleotide deletions were only observed at one site in the Atlantic halibut CR.

In order to further evaluate the distribution of sequence variation among the halibut mitochondrial genes, both

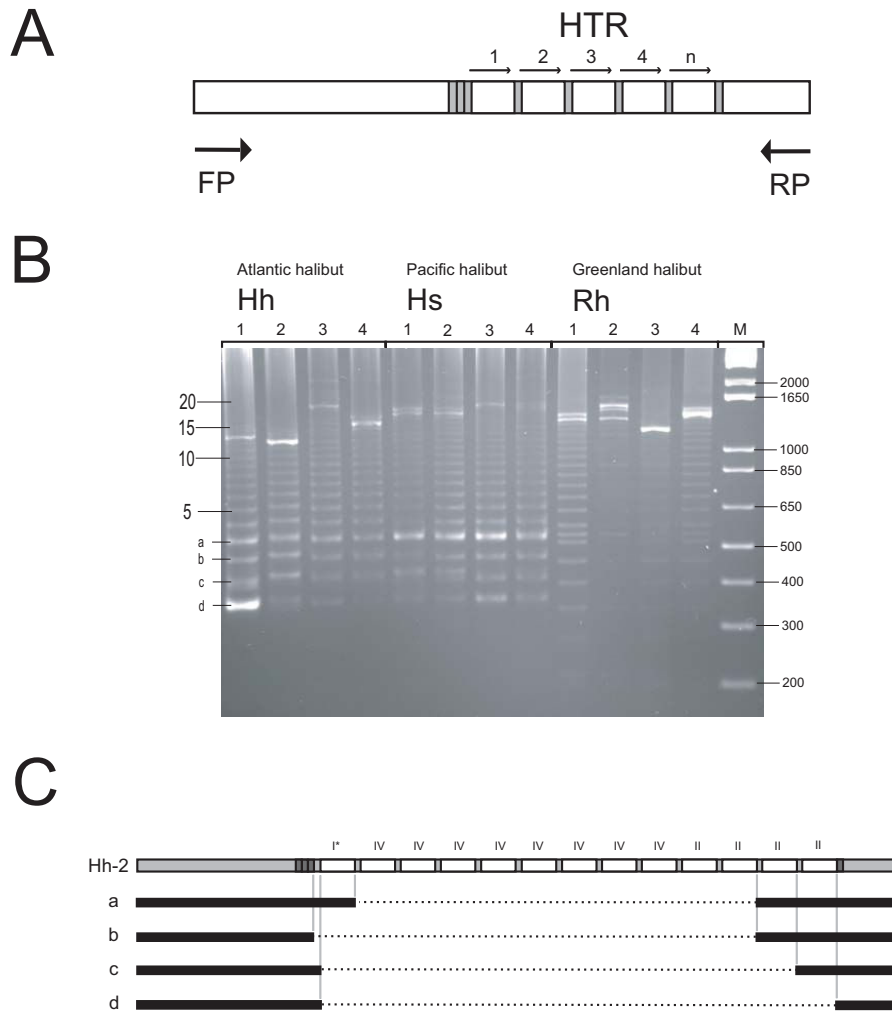


Figure 3

Heteoplasmic features of HTR arrays in halibut mtDNA. (A) Schematic map of the analysed HTR and flanking regions. The HTR arrays were amplified using a forward primer (FP) and a reverse primer (RP). Here, primer sets L16293/H17347 and L16376/H17369 were used on Atlantic/Pacific halibuts and Greenland halibut, respectively. (B) Separation of amplified products in a 2.5% agarose gel. M, the size marker 1 Kb Plus DNA Ladder from Invitrogen (right). Number of repeat motifs is indicated (left). The four smallest amplified fragments from Hh-2 (marked a, b, c, and d) were eluted from the gel and further sequence analysed. (C) Summary of sequence analyses of fragment a-d from Hh-2. Note that fragment a contains three repeats of the 61-bp motif (I*, II, II), fragment b contains two repeat motifs (II, II), fragment c contains a single motif (II), and fragment d lacks a complete motif. Motif I* is not present in the plasmid cloned array of Hh-2 (Figure 2) and may represent site heteroplasmy at array motif position 33.

within and between species, substitution versus nucleotide position was estimated for the different gene regions. This ratio was then divided by the ratio obtained for the mitochondrial ribosomal DNA (mt-rDNA; mtSSU + mtLSU; 2665 bp) in order to estimate a relative number of the mitochondrial gene region variation that could be compared between different species and datasets. Despite the fact that numbers of specimens are too low to perform statistics, some general trends were seen (Table 2). First, protein coding genes were about 3–4 times more variable than mt-rDNA both within and between species. The cytochrome c oxidase (CO) subunits were slightly more conserved than the other mitochondrial encoded subunits.

Second, the tRNA gene pool (ca 1550 bp) has a similar sequence variation rate as the mt-rDNA. Finally, whereas the CR possesses a between-species sequence variation similar to that of most of the protein genes, it was clearly elevated within the halibut species. In fact, the CRs in Atlantic-, Pacific, and Greenland halibuts were about 10 times more variable per site than the corresponding mt-rDNAs.

Based on the knowledge about gene specific variability within halibut mtDNA we selected three regions with moderate to high sequence variation (parts of ND1, COI, and CR) for an extended study of Atlantic halibut. Thirty

Table 2: Estimates of gene specific variation related to the mitochondrial ribosomal DNA gene region

Gene ¹	Halibuts; within-species ²		Halibuts; between-species ³		<i>Theragra</i> ; within-species ⁴	
	Observed	Relative	Observed	Relative	Observed	Relative
ND1	0.0079	4.4	0.186	4.0	0.0226	4.6
ND2	0.0080	4.4	0.216	4.6	0.0163	3.3
ND3	0.0029	1.6	0.189	4.0	0.0172	3.5
ND4L	0.0090	5.0	0.128	2.7	0.0034	0.7
ND4	0.0051	2.8	0.199	4.2	0.0167	3.4
ND5	0.0067	3.7	0.209	4.4	0.0207	4.2
N6	0.0077	4.3	0.201	4.3	0.0172	3.5
COI	0.0045	2.5	0.151	3.2	0.0109	2.2
COII	0.0039	2.2	0.152	3.2	0.0043	0.9
COIII	0.0034	1.9	0.144	3.1	0.0140	2.9
A6	0.0068	3.8	0.198	4.2	0.0161	3.3
A8	0.0040	2.2	0.137	2.9	0.0119	2.4
Cyt B	0.0067	3.7	0.193	4.1	0.0158	3.2
CR ⁵	0.0211	11.7	0.220	4.7	0.0160	3.3
tRNA	0.0028	1.6	0.062	1.3	0.0013	0.3
SSU	0.0014	0.8	0.042	0.9	0.0063	1.3
LSU	0.0019	1.1	0.050	1.1	0.0041	0.8
SSU + LSU	0.0018	1.0	0.047	1.0	0.0049	1.0

Notes: ¹ Protein genes – all gene positions except stop codons. The variable sites are mainly transition substitutions at third codon positions. CR – control region nucleotides including the first and last three motifs of tandem repeats. tRNA genes – pool of all 22 tRNA genes, ca 1550 bp; SSU + LSU – combined mitochondrial small and large ribosomal subunit RNA genes, ca 2665 bp.

² Estimated average values within the three halibut species (Atlantic-, Pacific-, and Greenland halibuts) based on four specimens of each. The observed variation value is number of variable sites divided on total number of nucleotides of that particular mitochondrial region. The relative variation value is the observed variation divided on the combined SSU/LSU variation.

³ Estimated nucleotide variation between halibut species and includes the Atlantic halibut (Hh-I specimen), Pacific halibut (Hs-I specimen), Greenland halibut (Rh-I specimen), Spotted halibut, and Barfin flounder. Key features of species are given in Table 1.

⁴ Estimated nucleotide variation within pollocks (*Theragra*; Gadidae) and is based on 12 specimens representing one single species [11, 12].

⁵ The elevated substitution level in CR within halibut species is boxed.

additional specimens (15 wild caught and 15 farmed progenies) from a halibut hatchery were subjected to mtDNA PCR analysis (Figure 5A) and subsequently DNA sequencing. Here, a 1770 bp region was analysed and compared, and the results are summarized in Figure 5B. When including the 4 completely sequenced specimens (Hh-1 to Hh-4), 24 variable sites were detected resulting in 13 distinct haplotypes (Haplotypes a-m). Interestingly, 15 specimens possess an identical haplotype (Haplotype g; Figure 5B), all corresponding to the farmed progenies that probably reflect siblings, or half siblings. This result supports the potential of mtDNA as molecular marker in breeding programs, stock assessments, or population studies.

Discussion

We have sequenced and compared the complete mitochondrial genome sequences of 4 individuals each of the flatfish species Atlantic halibut, Pacific halibut, and Greenland halibut, all related members of the family Pleuronectidae. The mitochondrial genomes were similar to most other bony fish species, except for an unusual large and complex CR located between the tRNA-Pro and tRNA-Phe genes. Halibut CR contains a HTR array of a 61-

bp motif, most frequently present in 15–20 copies of each individual.

The within-species variation in mtDNA includes only about 20–100 sequence positions between the individuals. These numbers correlates well with those observed among 12 individuals of *Theragra* pollocks [11,12]. The variable sites are not equally distributed along the mitochondrial genome sequence, with the structural RNA genes as the most conserved sequence regions (Table 2). The latter observation is best explained by the complex structural constrains of their corresponding tRNA and rRNAs due to secondary and tertiary RNA:RNA interactions, as well as RNA:protein interactions. Interestingly, the structure determination of the vertebrate mitochondrial ribosome explains some of the dramatic reduction in size of the mitochondrial rRNAs, which leaves almost exclusively the highly conserved regions involved in ribosome function and ribosomal protein binding [24].

The elevated within-species sequence variation in CR observed in all three halibut species (Table 2) appears unique compared to other investigated fish mtDNA genomes. The only fish species where complete mtDNA sequences have been recovered from multiple specimens

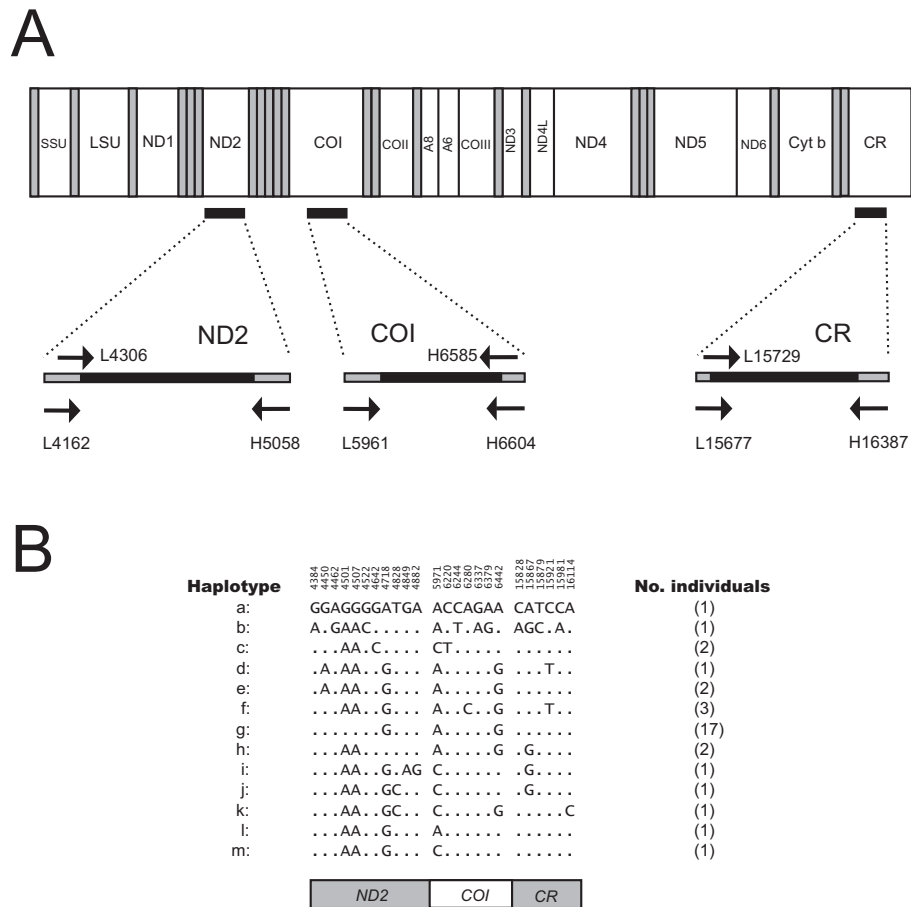


Figure 5 Mitochondrial haplotype in Atlantic halibut. (A) Amplification strategy of partial ND2, COI, and CR mitochondrial sequences. PCR primers and sequencing primers (Table 2) are indicated below and above the schematic line-drawings, respectively. (B) Summary of haplotypes detected within the ca 1770 bp sequence. Haplotype g refers to sibling or half sibling progenies from halibut hatchery.

(12 individuals) is the *Theragra pollocks* [11,12]. Intraspecific sequence variability estimates were similar to that of the halibut species, but with a notable exception of the CR. The *Theragra* CR showed variability similar to that of the protein coding genes, an observation significantly different from that of halibuts (Table 2). The variable sites in halibuts are almost exclusively located in the extended termination associated sequence (ETAS) and CSB regions located at the 5' end and 3' end of the CR, respectively. What molecular processes that causes this elevated sequence variability is currently not known, but DNA recombination events at HTR arrays (see below) are likely to be involved.

HTRs in mitochondrial CR are widespread, but scattered among vertebrates [18]. Five different locations within the mitochondrial CR have been noted to harbour HTRs [25]. Whereas the RS1 and RS2 sites are located at the CR 5' end

in proximity to the termination association sequence, RS3 to RS5 are located close to the oriH replication at the 3' end of the CR. Thus, the presence of HTR in CR is probably associated with the DNA replication processes in vertebrate mtDNA [13]. The complexity of HTR motifs vary greatly among different vertebrates, from simple di- and tetra-nucleotide microsatellites to motifs more than 150 bp in length and at high copy numbers [26-28].

The halibut 61-bp motif HTR array is located at site RS5 between CSB-3 and the 3' end of CR (Figure 2A), and differs from the RS1 HTR arrays seen in e.g. Atlantic cod and Asian arowana that consist of only 2–6 copies of approximately 40-bp motifs [28-30]. The RS5 HTR is a conserved feature among the Pleuronectidae where a ca 60-bp motif array is present in e.g. Spotted halibut (*Verasper variegatus*; DQ403797), Barfin flounder (*V. moseri*; EF025506), Winter flounder (*Pseudopleuronectes americanus*), Yellowtail

flounder (*Limanda ferruginea*), and American plaice (*Hippoglossoides platessoides*) [31], in addition to the three halibut species investigated in this study. Interestingly, RS5 direct repeats are also noted in Soleidae, but these appear unrelated in sequence to the Pleuronectidae HTRs and do not create heteroplasmy in mtDNA [32]. Partial sequencing of the mitochondrial CR in European flounder (*Platichthys flesus*) identified a different repeat motif at RS1 [19,33]. This 19-bp motif was involved in extensive heteroplasmy identified in a study including 168 individuals [19]. Interestingly, two different types of repeat motifs were noted among the 18 individuals studied in more detail, and one of these contains a compound array consisting of both motif types. Our finding of multiple types of HTR motifs in Atlantic-, Pacific-, and Greenland halibuts represents an extended support of the observation in European flounder. Errors during mtDNA replication (e.g. slipped strand mispairing) [34] cannot fully explain the halibut length heteroplasmy since repeat motifs in arrays of most individuals are not identical (Figure 2). Furthermore, technically generated mutations in the sequences, as well as the possibility that an ancestral sequence variant that contained all motif variants, are both highly unlikely explanations since the same type of motifs appear in more than one species and that eight different types were present among the four individuals of Atlantic halibut. Thus, we strongly favour DNA recombination as the most plausible mechanism, a conclusion supporting the findings of Hoarau and co-workers in European flounder mtDNA [19].

Is there a biological role of the mitochondrial HTR arrays in halibuts? The facts that repeat motifs are highly conserved in sequence both between individuals and between Pleuronectidae species (Figure 2) indicate a functional role in the mitochondria. However, mitochondrial genomes lacking the motif, or with only a single copy present (Figure 3), favour no essential role of the array or the motif sequences. The deletion variant (fragment d in Figure 3C) may represent a dead-end of array heteroplasmy unless the HTR motif is reintroduced by DNA recombination. Interestingly, the deleted region is flanked by identical copies of the 11-bp motif and thus probably is generated by a slipped strand mispairing-like process [34], similar to that reported in mitochondria associated with some human diseases [35]. The HTR arrays in halibuts are located between the putative promoter region (3' end of CR) and oriH, and HTRs in RS5 have been functionally linked to the initiation of mtDNA replication [27]. A role of stable secondary structures of nucleotide repeats nucleotides has been suggested. Such putative structures might act at the RNA or DNA levels [36], but at present no experimental biochemical evidence has been provided to support this notion in mitochondria. To further elucidate the molecular evolution and biological

roles of HTR arrays in halibut mitochondrial genomes, investigations of the distribution and variation of arrays among different tissues and at different developmental stages should be performed. Studying array variability of mother and progeny would be of particular interest in order to identify possible DNA recombination events. The well studied example of similar RS5 arrays in mitochondria of European rabbits provides an interesting model system for such analyses [27,37-39].

Conclusion

Unusual molecular features of halibut mitochondrial genomes are located in the control region. Extensive size heteroplasmy was detected in Atlantic-, Pacific-, and Greenland halibut mitochondrial control regions. Heteroplasmic tandem repeat arrays contain different variants of a 61-bp motif in compound organization. We conclude that the most plausible explanation for array maintenance includes both slipped-strand mispairing and DNA recombination mechanisms.

Methods

Fish samples and DNA extraction

Key-features of fish samples and mitochondrial DNA sequences used in this study are listed in Table 1. Of the 30 additional Atlantic halibut specimens obtained from a halibut hatchery at Bodø University College, 15 were wild caught (Northern Norway) and 15 were farmed progenies from the hatchery. DNA was extracted from muscle tissue and fin clip by using the High Pure PCR Template Preparation Kit (Roche).

PCR amplification, cloning, DNA sequencing, and data analysis

Specific primer sets consisting of one heavy (H) and one light (L) strand primer (Additional file 1) were used to amplify the complete halibut mitochondrial genomes in five overlapping fragments (L466/H3978, L3851/H7461, L7109/H10004, L9620/H13706, and L12991/H530). In general, the PCR reactions were performed with the following cycling parameters: 94°C initial denaturation for 3 min, 15 cycles with 94°C denaturation for 60 sec, 48°C annealing for 60 sec, 72°C elongation for 4 min. Then, 15 cycles with 94°C denaturation for 60 sec, 53°C annealing for 60 sec, 72°C elongation for 4 min and finally 72°C for 10 min. Products were run on agarose gels containing ethidium bromide, and bands were excised and purified essentially as previously described [11]. When appropriate, PCR products were inserted into the pCR4-TOPO vector (Invitrogen) and transformed in *E. coli* competent cells. PCR products were sequenced on both strands by using the BigDye version 3.1 kit (Applied Biosystems) with the same primers as in the PCR and internal primers (Additional file 1). The sequencing products were analysed on an ABI genetic analyser (Applied Biosystems). In

general, computer analyses of DNA sequences were performed using software package programs from DNASTAR Inc.

Authors' contributions

KAM, TEJ, and BOK organized the sequencing of the mitochondrial genomes. SDJ, BOK, KAM, TM, and TEJ contributed to mtDNA sequence analyses. SDJ directed the research in collaboration with BOK and TM. SDJ wrote the paper in collaboration with BOK. All authors read and approved the final manuscript version.

Additional material

Additional file 1

PCR and DNA sequencing primers. Sequence information and location of DNA primers used in PCR and sequencing reactions

Click here for file

[<http://www.biomedcentral.com/content/supplementary/1471-2164-9-10-S1.doc>]

Acknowledgements

We thank Dag H. Coucheron for valuable discussions, Anita Ursvik for technical advices, Arild Eeg (Risør Aquarium, Norway) for providing the Hh-4 specimen of Atlantic halibut, and Michael E. Cobb (Pacific Northwest National Laboratory, Washington, USA) and Ruth Withler (Pacific Biological Station, Nanaimo, Canada) for providing the Pacific halibut samples Hs-1 and Hs-2/Hs-3/Hs-4, respectively. This work was supported by grants from Bodø University College and University of Tromsø.

References

- Gibson RN: **Flatfishes. Biology and Exploitation.** In *Fish and Aquatic Resources, Series 9* Blackwell Publishing; 2005. ISBN 0-632-05926-5
- Sotelo CG, Calo-Mata P, Chalela MJ, Perez-Martin RI, Rehbein H, Hold GL, Russell VJ, Pryde S, Quinteiro J, Izquierdo M, Rey-Mendez M, Rosa C, Santos AT: **Identification of flatfish (Pleuronectiforme) species using DNA-based technoques.** *J Agric Food Chem* 2001, **49**:4562-4569.
- Bruford MW, Bradley DG, Luikart G: **DNA markers reveal the complexity of livestock domestication.** *Nature Rev Genet* 2003, **4**:900-910.
- Waugh J: **DNA barcoding in animal species: progress, potential and pitfalls.** *BioEssays* 2007, **29**:188-197.
- Boore JL: **Animal mitochondrial genomes.** *Nucleic Acids Res* 1999, **27**:1767-1780.
- Miya M, Takeshima H, Endo H, Ishiguro NB, Inoue JG, Mukai T, Satoh TP, Yamaguchi M, Kawaguchi A, Mabuchi K, Shirai SM, Nishida M: **Major patterns of higher teleostean phylogenies: a new perspective based on 100 complete mitochondrial DNA sequences.** *Mol Phylogenet Evol* 2003, **26**:121-38.
- Yamanoue Y, Miya M, Matsuura K, Yagishita N, Mabuchi K, Sakai H, Katoh M, Nishida M: **Phylogenetic position of tetraodontiform fishes within the higher teleosts: Bayesian inferences based on 44 whole mitochondrial genome sequences.** *Mol Phylogenet Evol* 2007, **45**:89-101.
- Minegishi Y, Aoyama J, Inoue JG, Miya M, Nishida M, Tsukamoto K: **Molecular phylogeny and evolution of the freshwater eels genus *Anguilla* based on the whole mitochondrial genome sequences.** *Mol Phylogenet Evol* 2005, **34**:134-146.
- Lavoue S, Miya M, Saitoh K, Ishiguro NB, Nishida M: **Phylogenetic relationships among anchovies, sardines, herrings and their relatives (Clupeiformes), inferred from whole mitogenome sequences.** *Mol Phylogenet Evol* 2007, **43**:1096-1105.
- Doiron S, Bernatchez L, Blier PU: **A comparative mitogenomic analysis of the potential adaptive value of Arctic charr mtDNA introgression in brook charr populations (*Salvelinus fontinalis* Mitchell).** *Mol Biol Evol* 2002, **19**:1902-1909.
- Ursvik A, Breines R, Christiansen JS, Fevolden S-E, Coucheron DH, Johansen SD: **A mitogenomic approach to the taxonomy of pollocks: *Theragra chalcogramma* and *T. finnmarkica* represent one single species.** *BMC Evol Biol* 2007, **7**:87.
- Yanagimoto T, Kitamura T, Kobayashi T: **Complete nucleotide sequence and variation of mitochondrial DNA from 10 individuals of walleye Pollock, *Theragra chalcogramma*.** *Fisheries Science* 2004, **70**:885-895.
- Ballard WO, Whitlock MC: **The incomplete natural history of mitochondria.** *Mol Ecol* 2004, **13**:729-744.
- Barr CM, Neiman M, Taylor DR: **Inheritance and recombination of mitochondrial genomes in plants, fungi and animals.** *New Phytologist* 2005, **168**:39-50.
- KrAYSberg Y, Schwarts M, Brown A, Ebralidse K, Kunz WS, Clayton DA, Vissing J, Khrapko K: **Recombination of human mitochondrial DNA.** *Science* 2004, **304**:981.
- Gyllenstein U, Wharton D, Josefsson A, Wilson AC: **Paternal inheritance of mitochondrial DNA in mice.** *Nature* 1991, **352**:255-257.
- Piganeau G, Gardner M, Eyre-Walker A: **A broad survey of recombination in animal mitochondria.** *Mol Biol Evol* 2004, **21**:2329-2325.
- Lunt DH, Whipple LE, Hyman BC: **Mitochondrial DNA variable number tandem repeats (VNTRs): utility and problems in molecular ecology.** *Mol Ecol* 1998, **7**:1441-1455.
- Hoarau G, Holla S, Lescasse R, Stam WT, Olsen JL: **Heteroplasmy and evidence for recombination in the mitochondrial control region of the flatfish *Platichthys flesus*.** *Mol Biol Evol* 2002, **19**:2261-2264.
- Tatarenkov A, Avise JC: **Rapid concerted evolution in animal mitochondrial DNA.** *Proc R Soc B* 2007, **274**:1795-1798.
- Mishmar D, Ruiz-Pesini E, Golik P, Macaulay V, Clark AG, Hosseini S, Brandon M, Easley K, Chen E, Brown MD, Sukernik RI, Olckers A, Wallace DC: **Natural selection shaped regional mtDNA variation in human.** *Proc Natl Acad Sci USA* 2003, **100**:171-176.
- Hurst GDD, Jiggins FM: **Problems with mitochondrial DNA as a marker in population, phylogeographic and phylogenetic studies: the effect of inherited symbionts.** *Proc R Soc R* 2005, **272**:1525-1534.
- National Center for Biotechnology Information** [<http://www.ncbi.nlm.nih.gov/>]
- Sharma MR, Koc EC, Datta PP, Booth TM, Spremulli LL, Agrawal RK: **Structure of the mammalian mitochondrial ribosome reveals an expanded functional role for its component proteins.** *Cell* 2003, **115**:97-108.
- Savolainen P, Arvestad L, Lundeberg J: **mtDNA tandem repeats in domestic dogs and wolves: mutation mechanism studied by analysis of the sequence of imperfect repeats.** *Mol Biol Evol* 2000, **17**:474-488.
- Berg T, Moum T, Johansen S: **Variable numbers of simple tandem repeats make birds of the order Ciconiiformes heteroplasmic in their mitochondrial genomes.** *Curr Genet* 1995, **27**:257-262.
- Dufresne C, Mignotte F, Gueride M: **The presence of tandem repeats and the initiation of replication in rabbit mitochondrial DNA.** *Eur J Biochem* 1996, **235**:593-600.
- Yue GH, Liew WC, Orban L: **The complete mitochondrial genome of a basal teleost, the Asian arowana (*Sclerophages formosus*, Osteoglossidae).** *BMC Genomics* 2006, **7**:242.
- Arnason E, Rand DM: **Heteroplasmy of short tandem repeats in mitochondrial DNA of Atlantic cod, *Gadus morhua*.** *Genetics* 1992, **132**:211-220.
- Johansen S, Bakke I: **The complete mitochondrial DNA sequence of Atlantic cod (*Gadus morhua*): relevance to taxonomic studies among codfishes.** *Mol Mar Biol Biotechnol* 1996, **5**:203-214.
- Lee W-J, Conroy J, Howell WH, Kocher TD: **Structure and evolution of teleost mitochondrial control region.** *J Mol Evol* 1995, **41**:54-66.

32. Manchado M, Catanese G, Ponce M, Funes V, Infante C: **The complete mitochondrial genome of the Senegal sole, *Solea senegalensis* Kaup. Comparative analysis of tandem repeats in the control region among soles.** *DNA Sequence* 2007, **18**:169-175.
33. Tinti F, Colombari A, Vallisneri M, Piccinetti C, Stagni AM: **Comparative analysis of a mitochondrial DNA control region amplified from three Adriatic flatfish species and molecular phylogenesis of Pleuronectiformes.** *Mar Biotechnol* 1999, **1**:20-24.
34. Levinson G, Gutman GA: **Slipped-strand mispairing: a major mechanism for DNA sequence evolution.** *Mol Biol Evol* 1987, **4**:203-221.
35. Bianchi NO, Bianchi MS, Richard SM: **Mitochondrial genome instability in human cancers.** *Mutat Res* 2001, **488**(1):9-23.
36. Mirkin SM: **Expandable DNA repeats and human disease.** *Nature* 2007, **447**:932-940.
37. Casane D, Dennebouy N, deRochambeau H, Mounolou JC, Monnerot M: **Genetic analysis of systematic mitochondrial heteroplasmy in rabbits.** *Genetics* 1994, **138**:471-480.
38. Casane D, Dennebouy N, deRochambeau H, Mounolou JC, Monnerot M: **Nonneutral evolution of tandem repeats in the mitochondrial DNA control region of Lagomorphs.** *Mol Biol Evol* 1997, **14**:779-789.
39. Casane D, Gueride M: **Evolution of heteroplasmy at a mitochondrial tandem repeat locus in cultured rabbit cells.** *Curr Genet* 2002, **42**:66-72.

Publish with **BioMed Central** and every scientist can read your work free of charge

"BioMed Central will be the most significant development for disseminating the results of biomedical research in our lifetime."

Sir Paul Nurse, Cancer Research UK

Your research papers will be:

- available free of charge to the entire biomedical community
- peer reviewed and published immediately upon acceptance
- cited in PubMed and archived on PubMed Central
- yours — you keep the copyright

Submit your manuscript here:
http://www.biomedcentral.com/info/publishing_adv.asp

