

This is the peer reviewed version of the following article: Govaert, L., Fronhofer, E. A., Lion, S., Eizaguirre, C., Bonte, D., Egas, M., ... Matthews, B. (2018). Eco-evolutionary feedbacks – Theoretical models and perspectives. *Functional Ecology*, 33(1), 13-30, which has been published in final form at <https://doi.org/10.1111/1365-2435.13241>. This article may be used for non-commercial purposes in accordance with Wiley Terms and Conditions for Use of Self-Archived Versions.

# Eco-evolutionary feedbacks — theoretical models and perspectives

Lynn Govaert<sup>1,2,3,\*</sup>, Emanuel A. Fronhofer<sup>4,\*,+</sup>, Sébastien Lion<sup>5</sup>, Christophe Eizaguirre<sup>6</sup>, Dries Bonte<sup>7</sup>, Martijn Egas<sup>8</sup>, Andrew P. Hendry<sup>9</sup>, Ayana De Brito Martins<sup>10</sup>, Carlos J. Melián<sup>10</sup>, Joost A. M. Raeymaekers<sup>11</sup>, Irja I. Ratikainen<sup>12,13</sup>, Bernt-Erik Saether<sup>12</sup>, Jennifer A. Schweitzer<sup>14</sup> and Blake Matthews<sup>2</sup>

- 1 Laboratory of Aquatic Ecology, Evolution and Conservation, KU Leuven, Deberiotstraat 32, Belgium
- 2 Eawag: Swiss Federal Institute of Aquatic Science and Technology, Department of Aquatic Ecology, Überlandstrasse 133, CH-8600 Dübendorf, Switzerland
- 3 Department of Evolutionary Biology and Environmental Studies, University of Zurich, Winterthurerstrasse 190, CH-8057 Zürich, Switzerland
- 4 ISEM, Université de Montpellier, CNRS, IRD, EPHE, Montpellier, France
- 5 Centre d'Ecologie Fonctionnelle et Evolutive, CNRS, Université de Montpellier, Université Paul Valéry Montpellier 3, IRD, EPHE, Montpellier, France
- 6 Queen Mary University of London, Mile end Road, E14NS, London, United Kingdom
- 7 Ghent University, Dept. Biology, K.L. Ledeganckstraat 35, B-9000 Ghent, Belgium
- 8 Institute for Biodiversity and Ecosystem Dynamics, University of Amsterdam, The Netherlands
- 9 Redpath Museum and Department of Biology, McGill University, Montreal, QC, Canada
- 10 Fish Ecology and Evolution Department, Center for Ecology, Evolution and Biogeochemistry, Eawag, Swiss Federal Institute of Aquatic Science and Technology, Switzerland
- 11 Faculty of Biosciences and Aquaculture, Nord University, N-8049 Bodø, Norway
- 12 Department of Biology, Centre for Biodiversity Dynamics, Norwegian University of Science and Technology, Trondheim NO-7491, Norway
- 13 Institute of Biodiversity, Animal Health and Comparative Medicine, Graham Kerr Building, University of Glasgow, Glasgow G12 8QQ, United Kingdom
- 14 Department of Ecology and Evolutionary Biology, University of Tennessee, Knoxville, TN 37996, USA

\* These authors contributed equally.

+ Corresponding author. Orcid ID: 0000-0002-2219-784X

**Keywords:** theory, modelling, eco-evolutionary dynamics, feedback, ecology, demography, rapid evolution

## Correspondence Details

Emanuel A. Fronhofer  
Institut des Sciences de l'Evolution de Montpellier, UMR5554  
Université de Montpellier, CC065, Place E. Bataillon, 34095 Montpellier Cedex 5, France  
phone: +33 (0) 4 67 14 31 82  
email: [emanuel.fronhofer@umontpellier.fr](mailto:emanuel.fronhofer@umontpellier.fr)

## Abstract

- 2 1. Theoretical models pertaining to feedbacks between ecological and evolutionary processes are preva-  
4 lent in multiple biological fields. An integrative overview is currently lacking, due to little crosstalk  
between the fields and the use of different methodological approaches.
- 6 2. Here, we review a wide range of models of eco-evolutionary feedbacks and highlight their underlying  
8 assumptions. We discuss models where feedbacks occur both within and between hierarchical  
levels of ecosystems, including populations, communities, and abiotic environments, and consider  
feedbacks across spatial scales.
- 10 3. Identifying the commonalities among feedback models, and the underlying assumptions, helps us  
12 better understand the mechanistic basis of eco-evolutionary feedbacks. Eco-evolutionary feedbacks  
can be readily modelled by coupling demographic and evolutionary formalisms. We provide an  
overview of these approaches and suggest future integrative modelling avenues.
- 14 4. Our overview highlights that eco-evolutionary feedbacks have been incorporated in theoretical work  
16 for nearly a century. Yet, this work does not always include the notion of rapid evolution or concu-  
rent ecological and evolutionary time scales. We show the importance of density- and frequency-  
dependent selection for feedbacks, as well as the importance of dispersal as a central linking trait  
between ecology and evolution in a spatial context.

# 1 Introduction

Feedbacks are relevant to many biological systems and are central to ecology and evolutionary biology (Robertson, 1991). While ecology aims to understand the interactions between individuals and their environment, evolution refers to changes in allele frequencies over time. In the past both fields have, to a large extent, been studied in isolation. Evolutionary ecology (e.g. Roughgarden, 1979) is a notable exception, where links between ecology and evolution are key to empirical and theoretical research.

One of the pioneering studies on feedbacks between ecology and evolution dates back to Pimentel's work on 'genetic feedback' (Pimentel, 1961). In this feedback, frequencies and densities of different genotypes in a host population shift the overall population density. This change in density modifies selection on the host and consequently shifts genotype frequencies. Another early feedback concept of great importance is density-dependent selection (Chitty, 1967) where the strength of selection changes due to changing population densities, and vice versa (crowding; see also Clarke, 1972; Travis *et al.*, 2013).

In recent years, the recognition that evolution can be rapid and occur on similar timescales as ecology (Hendry & Kinnison, 1999; Hairston *et al.*, 2005) has prompted research at the interface between the two disciplines (often termed 'eco-evolutionary dynamics'; Hendry, 2017) and renewed the interest in feedbacks between ecological and evolutionary processes ('eco-evolutionary feedbacks' (EEF); see Fig. 1A; Ferrière *et al.*, 2004; Post & Palkovacs, 2009; Pelletier *et al.*, 2009). EEFs involve situations where an ecological property influences evolutionary change, which then feeds back to an ecological property, or vice versa. Classical empirical examples include that predation (ecological property) can lead to selection on defence traits in prey (evolutionary change) which in turn feeds back on predator-prey dynamics and shifts the phase of predator-prey oscillations (feedback on ecological property; reviewed in Hiltunen *et al.*, 2014).

Contemporary theory about EEFs builds on many of the same fundamental ideas established by Pimentel (1961) and Chitty (1967) and feedbacks remain central to the development of theory in evolutionary ecology (for recent overview see McPeck, 2017; Lion, 2018). Such feedbacks have been found to generate spatial variation in biotic interactions (geographic mosaic of coevolution; Thompson, 2005), impact population regulation and community dynamics (Abrams & Matsuda, 1997; Patel *et al.*, 2018, e.g.), and lead to species coexistence via stabilizing mechanisms (Kremer & Klausmeier, 2017), to name but a few examples. Besides theoretical work, empirical and especially experimental tests of eco-evolutionary dynamics and feedbacks have increased recently (e.g., Yoshida *et al.*, 2003; Becks *et al.*, 2010, 2012; Schoener, 2011; Turcotte *et al.*, 2011; Brunner *et al.*, 2017), and have strongly contributed to our understanding on EEFs.

The increasing evidence on the importance of EEFs has resulted in a series of existing literature reviews (e.g. Fussmann *et al.*, 2007; Pelletier *et al.*, 2009; Post & Palkovacs, 2009; Shefferson & Salguero-

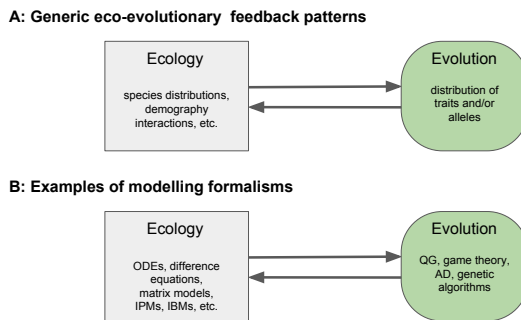


Figure 1: Eco-evolutionary feedbacks (EEF). (A) Generic representation of feedbacks between ecology (grey boxes) and evolution (green boxes) implying that the effect of an ecological property (e.g., demography) can be traced to evolutionary change (e.g., shift in allele frequencies; eco-to-evo) and back again to an ecological property (evo-to-eco), or vice versa. (B) Examples of demographic (ecological) and evolutionary modelling formalisms that can be coupled to analyse EEFs. Of course, ODEs and IBMs can be used to model evolution, but, strictly speaking, they will make use of some of the evolutionary modelling frameworks, like QG or genetic algorithms (GA), to do so. The box types and colours will be used throughout the text to imply ecological or evolutionary aspects, respectively. For a detailed explanation of abbreviations, see Box 1.

Gómez, 2015; Bailey & Schweitzer, 2016; Van Nuland *et al.*, 2016; Hendry, 2017). These reviews, however, have been rather at the intersection of empirical and theoretical studies (Fussmann *et al.*, 2007), focus on particular systems (e.g. plant-soil feedbacks Bailey & Schweitzer, 2016; Van Nuland *et al.*, 2016; terHorst & Zee, 2016) or very broadly discuss eco-evolutionary dynamics (e.g. Hendry, 2017). None of these overviews include the theoretical literature in its full diversity, neither do they explicitly compared different modelling frameworks for studying EEFs.

Here, we provide an overview of theoretical work that includes EEFs (for a comprehensive overview of empirical work see Hendry, 2017) as an attempt to provide a conceptual unification that furthers our general understanding of eco-evolutionary feedback theory. While this review is focused on theoretical work, the insights learnt are valuable for testing predictions empirically. Currently, the relevant theory varies in methodological approaches (e.g., quantitative genetics, adaptive dynamics) and between thematic subdisciplines (e.g., evolutionary rescue or suicide, niche construction) with mostly subtle, and at times semantic, distinctions between them (Matthews *et al.*, 2014). In an attempt to bridge these boundaries we organize our non-exhaustive overview around two axes of biological complexity: community (from single to multi-species models) and spatial complexity (from non-spatial to spatially explicit models). Our review focuses specifically on feedbacks and discusses EEFs in a theoretical context across a broad scale of biological levels with a strong methodological focus. We summarize available formalisms used to study EEFs theoretically, highlight their underlying assumptions and give an overview of existing theoretical work to highlight research gaps. We use our synthesis to expand the generic feedback loop shown in Fig. 1A and to suggest a more mechanistic representation. Lastly, we make suggestions for

future directions and ways to overcome the barriers that have so far prevented synthesis of theory in this field.

## 2 Formalisms used for modelling EEFs

Theoreticians use a variety of demographic models to study the interplay between ecology and evolution, including classical ordinary differential equation models (ODEs, e.g., Lotka-Volterra equations, for explanations and abbreviations of recurring terms see Box 1), structured models (matrix models, physiologically structured population models, integral projection models), or stochastic agent-based models. By introducing genetic variation (via standing genetic variation and/ or mutations) in one or several populations, the models can capture EEFs (Fig. 1B). Because such models are not always analytically tractable, various formalisms, such as adaptive dynamics (AD) and quantitative genetics (QG) have been developed to further our understanding of EEFs. Typically, these approaches take EEFs into account through simplifying assumptions on the time scale of ecological and evolutionary processes and on the mutation regime (reviewed in Lion, 2018).

Models using AD rely on a separation of time scales between ecological and evolutionary dynamics. Specifically, these models assume that mutations are so rare that the ecological community is always on its attractor, so that the evolutionary dynamics take the form of a temporal sequence of allele substitutions (i.e., mutation-limited evolution). The success of a mutant allele is then measured by its invasion fitness (Metz *et al.*, 1992; Geritz *et al.*, 1998). The separation of time scales between ecology and evolution, however, does not mean that there is no EEF. The feedback is materialised by the fact that the invasion fitness of a mutant allele depends on the ecological conditions created by the resident community. In fact, the concept of a ‘feedback loop’ between ecology and evolution has been central in the development of AD (Ferrière & Legendre, 2012). Nevertheless, the focus on ecological attractors may be a limitation. Recent work by Chesson (2017) in an ecological context suggesting that the replacement of ecological attractors with time-dependent environmental functions to which the population converge may represent a way forward.

QG models, by contrast, start from a different perspective and explicitly consider evolution resulting from existing genetic variation. For a given quantitative trait, these models track the dynamics of different moments of the trait distributions that are central to eco-evolutionary dynamics (mean, variance, etc; Chevin *et al.*, 2017). Often, additional assumptions have to be made, to allow for simplifications. Many QG models assume that the trait distribution is Gaussian and tightly clustered around the mean (small variance or weak selection approximation). In that case, it becomes possible to approximate the ecological dynamics of the focal population as if all individuals had the mean trait value, and to understand the

change in mean trait in relation to a selection gradient, where the selection gradient itself depends on the ecological dynamics (e.g., Abrams & Matsuda, 1997; Luo & Koelle, 2013; Lion, 2018). This allows the coupling of ecology and evolution, similarly to AD, with the difference that ecological dynamics do not have to be at equilibrium (no separation of time scales; see Lande, 2007; Lande *et al.*, 2009, for the impact of environmental variation). Therefore, QG models can focus on short-term dynamics, which makes them potentially more applicable to experiments or field studies where rapid evolution is a key process.

On the demographic (ecological) side, ODEs, matrix population models (e.g., integral projection models — IPMs) and individual-based models (IBMs) have been used to study population dynamics, but have also been used to study simultaneous change of ecological (e.g., population size) and evolutionary parameters (e.g., strength of selection), without explicitly using the term EEF (see e.g., Caswell, 2006). However, ODEs and matrix population models can be combined with AD and QG approaches to investigate EEFs (Rees & Ellner, 2016). IBMs may rely on genetic algorithms to capture evolutionary dynamics (Fraser, 1957). In addition, IBMs lend themselves very easily to the incorporation of complexities such as stochasticity, spatial structure and kin competition (e.g. Poethke *et al.*, 2007), which are often difficult to handle using analytical models.

While all of these approaches can be used to answer similar question, there are often barriers to integration, stemming, for example, from the specific vocabulary of the field. Nevertheless, there has been some recent progress toward synthesis (Abrams *et al.*, 1993; Day, 2005; Day & Gandon, 2007; Lion, 2018). For example, it has been shown that as additive genetic variance in QG models becomes very small, results will converge to those of AD models, which provides a direct link between these two methodologies (e.g., Kremer & Klausmeier, 2013). As another example, Lion (2018) suggested considering the organism–environment feedback as central to eco-evolutionary models. In this formalism, the environmental vector captures both focal population densities, as well as external variables such as abiotic environments, and resources.

Beyond the scope of this review are complex adaptive systems models such as Bruggeman & Kooijman (2007) or Leibold & Norberg (2004), to name but two examples. These models allow for dynamics similar to trait evolution and simultaneously consider large numbers of species with phenotypes finely spaced along one or more trait axes. We next provide a general overview on models including EEFs and their results starting from populations to communities to end with ecosystems and food webs.

Box 1: Explanation of terms and abbreviations

**Adaptive dynamics (AD):** AD is a mathematical formalism, that provides a dynamical extension of classical optimisation approaches and evolutionary game theory to include density- and

frequency dependence (Diekmann, 2004; Waxman & Gavrillets, 2005). This makes eco-evolutionary feedbacks central to AD.

**Dispersal:** Dispersal is the movement of individuals away from their parents with potential consequences for gene flow (Clobert *et al.*, 2012).

**Eco-evolutionary feedback (EEF):** A reciprocal interaction between an ecological and evolutionary processes (see Fig. Fig. 1A). The ecological property influenced by evolutionary change need not be the same ecological property that led to the evolutionary change (narrow and broad sense feedbacks sensu Hendry, 2017).

**Evolutionary rescue (ER) and suicide (ES):** ER is the idea that a population can avoid extinction through rapid adaptation (Gonzalez *et al.*, 2013). By contrast, ES is the process by which evolution drives a population beyond its viability region, eventually causing extinction (Ferrière, 2000).

**Evolutionary game theory:** A branch of mathematics that studies the interactions between individuals in which the strategy exerted by an individual has a payoff that depends on both the individual's strategy and the strategies of the other individuals involved (McGill & Brown, 2007).

**Genetic algorithm (GA):** A type of optimization algorithm using techniques from evolutionary biology (i.e., mutation, inheritance, selection, and recombination) to find an optimized solution to a problem (e.g., Fraser, 1957).

**Individual-based model (IBM):** IBM (also agent-based model, ABMs) are bottom-up models in which a (meta)population or (meta)community is modelled as a number of discrete interacting individuals, in which each individual is characterized by a set of state variables (location, physiological or behavioural traits). The interactions between individuals result in (meta)population- and (meta)community or (meta)foodweb dynamics (Grimm, 1999; DeAngelis & Mooij, 2005).

**Integral projection model (IPM):** IPMs describe the dynamics of a population by projecting its size or trait distribution through time using a kernel distribution that connects individual-level vital rates such as survival, reproduction and development to population-level processes. IPMs can be coupled with AD or QG approaches (Rees & Ellner, 2016).

**Lotka-Volterra model (LV):** The LV model (named after Alfred Lotka and Vito Volterra) consists of ODEs describing predator and prey dynamics. Modifications of the basic model include e.g. the Rosenzweig-MacArthur model.

**Matrix population model:** Formalizes the life-cycle of a population in a matrix using either discrete life stages (classical matrix population models; Caswell 2006) or a continuous trait such as body size (see “integral projection model” above).

**Metapopulation and metacommunity:** A metapopulation *sensu lato* is a spatially structured population, connected by dispersal (Hanski, 1999; Harrison & Hastings, 1996). Similarly, a metacommunity is a spatially structured community, connected by dispersal (Leibold *et al.*, 2004).

**Quantitative genetics (QG):** QG studies the genetic basis of phenotypic variation, with a focus on the dynamics of continuous trait distributions (Lynch & Walsh, 1998).

### 136 3 EEFs within populations

Many theoretical studies have analysed EEfs within a single population in a temporal or spatial setting. In single-species non-spatial settings, EEfs are usually considered between changes in population size and changes in heritable traits. In a spatial setting, EEfs can occur between local population size and local trait values, but also among patches between regional (meta)population size and local or regional trait values. In addition, landscape structure (topology, connectivity) might influence local EEfs, but also induce feedbacks on a regional scale. This is because dispersal (demography) and gene flow (population genetics) are intrinsically linked.

#### 144 3.1 Feedbacks in single populations

Feedbacks over time can be intrinsic to the population, when it occurs between population density and trait values, or extrinsic, when it occurs between the availability of resources and trait values. For example, a quantitative trait subject to density-dependent or frequency-dependent selection (eco-to-evo) can influence population growth rate (evo-to-eco; Lande, 2007; Engen *et al.*, 2013; Travis *et al.*, 2013). Density- or frequency-dependent selection implies that an individual's fitness is not only determined by its trait value, but also by the population density or by the proportion of certain genotypes (Clarke, 1972; Travis *et al.*, 2013). In the case of density-dependent selection, changing population densities shift the selection pressure favouring different genotypes because of differential competitive ability. In turn, changing competitive abilities create varying ecological conditions leading to changes in density (MacArthur, 1962; Lande, 2007; Engen *et al.*, 2013).

Lively (2012) used a one-locus two-allele genetic system (QG with two types) to illustrate a feedback between population density and allele-frequency change assuming density-dependent selection (Fig. 2A). Similarly Lande (2007) and Engen *et al.* (2013) used QG models linking the evolution of a quantitative trait to population growth, strength of density dependence and environmental stochasticity. These authors found that in a constant environment, evolution will maximize mean fitness and mean relative fitness in the population which may change when population sizes fluctuate (Sæther & Engen, 2015).



Technically, the evolutionary response of the population due to a changing environment in these models is described using the phenotypic selection differential (accounting for individual survival and fecundity, but not inheritance) or in terms of the selection gradient (Leon & Charlesworth, 1978; Lande *et al.*, 2009).

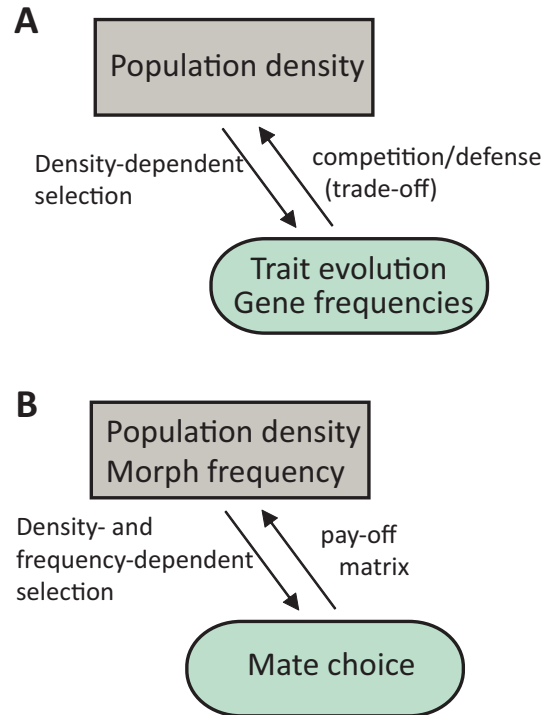


Figure 2: Examples of studies in which feedbacks occur in a single species non-spatial setting. (A) In Lande (2007) and Lively (2012) population density determines the selection pressure, resulting in evolution of some quantitative trait (Lande, 2007) or shifts in discrete genotype frequencies (Lively, 2012). (B) In Alonzo & Sinervo (2001) not only population density but also the frequency of morphs determine mate choice, which in turn determines the outcome of morph frequencies in the next generation influencing the trait of mate choice again.

The assumption of frequency-dependent selection is particularly relevant in the context of sexual selection and mate choice (Alonzo & Sinervo, 2001). Evolutionary game theory can be used to model a population consisting of female and male morphs where female mate preference depends on the total population size (density-dependent selection), but also on female morph frequency (frequency-dependent selection; Fig. 2B). This leads to an EEF between population size and morph frequencies via density- and frequency-dependent selection (eco-to-evo) and via fitness differences of the morphs (evo-to-eco; reviewed in Smallegange *et al.*, this issue). Very similar mechanisms have been discussed in the context of the evolution of cooperation (e.g., Lehtonen & Kokko, 2012; Gokhale & Hauert, 2016). For example, ecological conditions, such as resource limitation and variability may select for the evolution of cooperation (eco-to-evo), which can then feed back on demography leading to increased population sizes (“supersaturation”, Fronhofer *et al.*, 2011, in revision).

Finally, a classical EEF over time is often termed evolutionary rescue (ER, see Box 1; Lynch, 1993;

176 Gomulkiewicz & Holt, 1995; Gonzalez *et al.*, 2013). ER models have either used a QG approach, focusing  
on the population's capacity to track gradually changing optima in time (Burger & Lynch, 1995; Lande &  
178 Shannon, 1996) or space (Pease *et al.*, 1989; Polechová *et al.*, 2009; Uecker *et al.*, 2014) or a single mutation  
approach in which a population is exposed to a sudden severe environmental change (Gomulkiewicz &  
180 Holt, 1995; Orr & Unckless, 2014; Uecker, 2017). Interestingly, while ER leads to population persistence,  
adaptive evolution might also result in evolutionary trapping or suicide (ES, Ferrière, 2000; Parvinen  
182 & Dieckmann, 2013). In the latter, trait change drastically degrades population viability leading to  
extinction (Ferrière & Legendre, 2012; Engen & Sæther, 2017) because selection acting at the individual  
184 level does not necessarily optimize population level properties. Whether the result is ER or ES, these  
models demonstrate that EEFs can be of applied relevance to conservation, for example. In summary,  
186 feedbacks over time are usually mediated by intrinsically (density- / frequency dependent selection) or  
extrinsically (environment) changing selection pressures. The consequences of these feedbacks may be  
188 positive (e.g., increased densities and survival) or negative (ES) at the population level.

### 3.2 Feedbacks in spatially structured populations

190 Spatial models allow for EEFs between local demography or metapopulation conditions and an evolving  
trait. The feedback can be modified by external properties such as patch dynamics (colonization and  
192 extinction rates; Hanski & Mononen, 2011) or landscape structure (Kubisch *et al.*, 2016; Fronhofer &  
Altermatt, 2017). In models with discrete habitat patches, dispersal is a central trait connecting local  
194 patches, and can have important effects on both ecological (Clobert *et al.*, 2012) and evolutionary (e.g.,  
can limit or favour local adaptation; Lenormand, 2002; Räsänen & Hendry, 2008; Nosil *et al.*, 2009) pro-  
196 cesses. The evolution of dispersal likely is the most frequently studied example of an EEF in fragmented  
landscapes (Legrand *et al.*, 2017).

198 In a spatial model without dispersal evolution, Gomulkiewicz & Holt (1995) show that ER can be  
strongly hampered by stochasticity, for example, as a consequence of low population sizes (see Go-  
200 mulkiewicz *et al.*, 1999, for another example of spatial ER). Interestingly, the probability of rescue can  
be a non-monotonic function of migration rates (Uecker *et al.*, 2014). If dispersal is allowed to evolve  
202 (Ronce, 2007), it may be modelled as a discrete trait with dispersing and resident genotypes (e.g., Hanski  
& Mononen, 2011), as a quantitative trait (Hanski, 2011), or even as an evolving reaction norm (Travis &  
204 Dytham, 1999; Poethke & Hovestadt, 2002, for an overview on the genetics of dispersal and how disper-  
sal is incorporated into models see Saastamoinen *et al.* 2018). For example, combining stochastic patch  
206 occupancy models with description of mean phenotypic changes in local populations, Hanski & Mononen  
(2011) studied an EEF between patch dynamics (colonisation and extinction) and the frequency of a  
208 disperser genotype (for details see Fig. 3A).

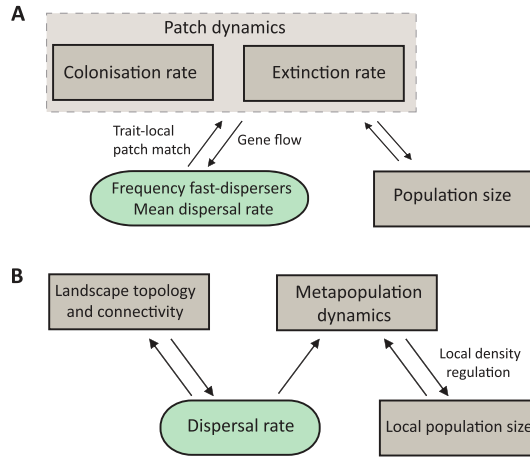


Figure 3: Examples of studies with spatial feedbacks. (A) Study by Hanski (2011) and Hanski & Mononen (2011) where patch dynamics driven by colonisation and extinction might influence disperser frequency (Hanski & Mononen, 2011) or shifts mean dispersal rate (Hanski, 2011), which in turn influences patch dynamics. (B) Study by Fronhofer & Altermatt (2017) in which landscape topology influences dispersal evolution, which in turn influences colonization probabilities and metapopulation dynamics (occupancy, turnover, genetic structure, global extinction risk).

In spatial models, EEFs can link processes at different spatial scales. For instance, Poethke *et al.* (2011) show that the selective increase of patch size, e.g., as a conservation measure, can select against dispersal (eco-to-evo) which decreases re-colonization probabilities and can lead to ES (evo-to-eco). Evolution can also rescue populations from extinction which will depend on the rate of environmental change and landscape settings: ER may be found when environmental changes are not too fast (Schiffers *et al.*, 2013), but the contrary has also been found (Boeye *et al.*, 2013). Similarly, in a range expansion context, Burton *et al.* (2010) and Fronhofer & Altermatt (2015) showed that the ecological process of a range expansion can select for increased dispersal at range fronts (Travis & Dytham, 2002) and may feed back on the distribution of population densities across the range via life-history trade-offs. The importance of landscape structure for EEFs is laid out in Fronhofer & Altermatt (2017) (Fig. 3B). Taken together, spatial models may consider local adaptation to abiotic conditions as a heritable trait and fix dispersal or may consider dispersal as an evolving trait. Altogether, the studies show that dispersal is an excellent candidate to link ecology (demography from a single population or metapopulation) and evolution, making dispersal central to EEFs.

## 4 EEFs involving two species

In multi-species systems, EEFs can be mediated by intra- and interspecific densities that affect fitness and trait distributions (Travis *et al.*, 2013). In the following, we consider four major categories of two-species interactions: interspecific competition, predator-prey, parasite-host and mutualistic interactions.

## 4.1 Interspecific competition

Interspecific competition is a reciprocal interaction for a shared limiting resource (Dhondt, 1989), such as food. In this interaction, the competing species can evolve different niches in order to coexist (Brown & Wilson, 1956; Abrams, 1986; Taper & Case, 1992). Many studies have shown that competition-induced selection can result in adaptive divergence through ecological character displacement (Brown & Wilson, 1956; Slatkin, 1980; Taper & Case, 1992; Schluter, 2000). However, other studies have shown that competition could also lead to functional convergence of the competitors (Abrams, 1990; terHorst *et al.*, 2010). In these models, EEFs may occur because competing species exert selection pressures that result in trait evolution (eco-to-evo) that might alter selection pressures on both species (evo-to-eco) (e.g., Vasseur *et al.*, 2011, Fig. 4A). The earlier models of character displacement assume fixed variance and often Gaussian shapes for the species' character distribution (e.g., Slatkin, 1980). Recently, Sasaki & Dieckmann (2011) suggested the oligomorphic approximation as a way to describe the QG of an asexually reproducing population that consists of multiple morphs. Sasaki & Dieckmann (2011) then used this approach to gain a more detailed understanding on the dynamics of evolutionary branching in a resource competition model and showed among other aspects how to obtain threshold conditions for evolutionary branching and how mutations affect these conditions.

Models on interspecific competition include, for example, Dieckmann & Doebeli (1999). This study used an IBM, in which the evolving trait determines the carrying capacity (competition), and in which individuals survive and die via density- and frequency-dependence giving rise to a feedback between density and trait evolution, resulting in speciation via evolutionary branching. The authors showed that evolution of assortative mating can lead to reproductive isolation, resulting in increased diversity and that non-random mating is a prerequisite for evolutionary branching (see also Thibert-Plante & Hendry, 2009). In a similar model, Aguilée *et al.* (2013) found that landscape structure highly influences the outcome of diversity resulting from underlying dynamics of competition and assortative mating. The latter study used an IBM assuming density-dependent resource competition and stronger competition between individuals with similar trait values, inducing frequency-dependent selection and considered traits linked to resource utilization and to mate choice. Last, a model by terHorst *et al.* (2010) found that evolutionary convergence could occur in a multispecies model when less resources than species were present and when the intra- and interspecific competition coefficients were equal. In this model, the rate of competitive exclusion slows down as species become more similar to one another (evo-to-eco), giving species more time to evolve (eco-to-evo). In summary, prominent examples of EEFs in two-species competitive systems, focus on character displacement and potentially speciation. While analytical models using ODE and the AD framework are well established (see e.g., Kisdi, 1999), studies on two-species

260 interactions often make use of IBMs combined with GA to include a relatively high level of biological complexity.

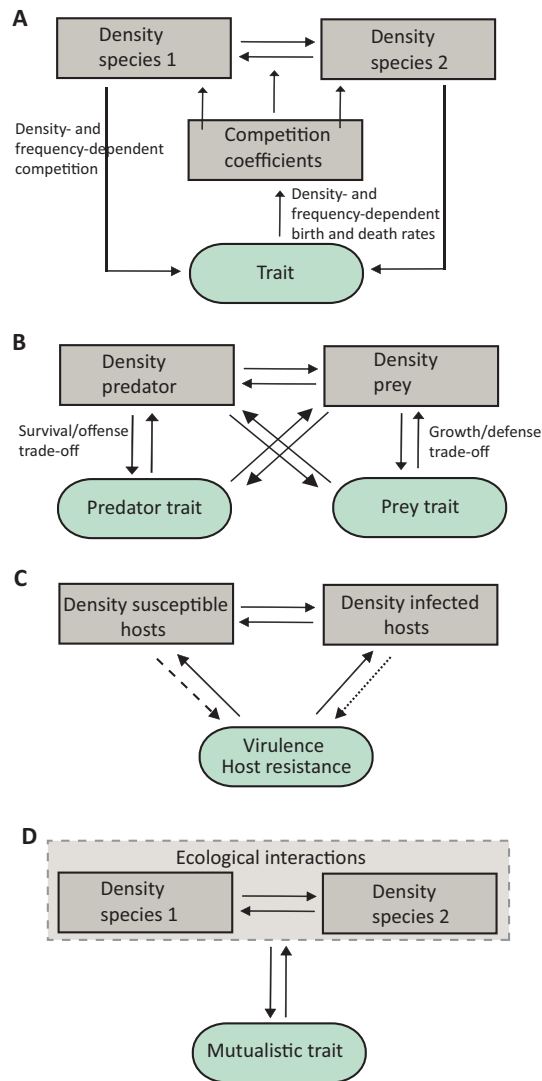


Figure 4: Examples of studies in which feedbacks occur in two-species settings. (A) Study by Vasseur *et al.* (2011) in which the competition coefficients determining the strength of intra- and interspecific competition are modelled in function of an evolvable trait (growth or defence trait) under density- and frequency-dependent competition. (B) General figure on possible EEFs in predator-prey dynamics (detailed in Cortez & Weitz, 2014). Generally, a trade-off between growth and predator defence is assumed in the prey population, and a trade-off between mortality and offence is assumed in the predator population, which due to the previously described trade-off, determines predator and prey density. (C) General figure on possible feedbacks in host-parasite dynamics (see Luo & Koelle, 2013). In a model of virulence evolution, density of susceptible hosts determines the degree of virulence which feeds back to change the density of susceptible hosts (striped arrow). In a model on host resistance, density of the infected hosts determine the evolution of host resistance (dashed arrow), which in turn determines the density of both susceptible and infected hosts. (D) General representation of possible feedbacks in mutualistic interactions. Changes in the ecological interactions between species determine the evolution of a mutualistic trait, which, in turn, can change the ecological interactions between species.

## 262 4.2 Predator-prey interactions

In a predator-prey interaction, one species acts as a predator feeding on the other species serving as  
264 prey. EEFs in predator-prey systems imply that predator densities may induce trait evolution, for  
example, in prey defence (eco-to-evo) resulting in consequent shifts in prey and predator densities (evo-  
266 to-eco; Fig. 4B). Many studies have found that rapid evolution in prey defence due to shifting predator  
abundances results in antiphase cycles rather than  $\frac{1}{4}$ -lag cycles predicted by non-evolutionary models  
268 (Yoshida *et al.*, 2003, 2007; Becks *et al.*, 2010). Additionally, feedbacks can stabilize or destabilize  
predator-prey dynamics depending on genetic variation and trade-off shapes (Abrams & Matsuda, 1997;  
270 Abrams, 2000; Cortez & Ellner, 2010; Cortez, 2016).

Predator-prey dynamics have been extensively studied using models of trait evolution of the prey  
272 (e.g. Abrams & Matsuda, 1997; Cortez, 2016; McPeck, 2017), the predator (Cortez & Ellner, 2010), or  
both (e.g. Cortez & Weitz, 2014; van Velzen & Gaedke, 2017, Fig. 4B). In all three instances EEFs were  
274 modelled using either separate equations for the ecological and evolutionary dynamics (e.g. Abrams &  
Matsuda, 1997) or QG recursion equations or an approximation of those (van Velzen & Gaedke, 2017),  
276 using an AD approach (Marrow *et al.*, 1996) or by using multiclonal LV equations (which are identical to  
'ecological selection' models Jones & Ellner, 2007; Ellner & Becks, 2011; Yamamichi *et al.*, 2011; Cortez  
278 & Weitz, 2014; Haafke *et al.*, 2016). Including life-history trade-offs between defence and fecundity may  
lead to recurrent EEFs (Meyer *et al.*, 2006; Huang *et al.*, 2017).

280 Phenotypic plasticity has been found to play an important role in predator-prey EEFs and has been  
incorporated for example by Yamamichi *et al.* (2011), who found that plasticity in prey defence promotes  
282 stable population dynamics more than rapid evolutionary responses, although, plasticity was not advan-  
tageous in stable environments. The evolution of plasticity has been studied by Fischer *et al.* (2014),  
284 who extended an LV model allowing for variation in plasticity among multiple genotypes of prey. The  
inclusion of such variation in models improved their ability to explain predator-prey dynamics. Overall,  
286 predator-prey EEFs are a classical example of feedbacks involving phase shifts and impacts on stability.  
These effects are classically modelled with ODEs. Recent work highlights the importance of incorporating  
288 both effects of genetic diversity and phenotypic plasticity to explain community dynamics (Yamamichi  
*et al.*, 2011; Kovach-Orr & Fussmann, 2013).

## 290 4.3 Host-parasite interactions

In a host-parasite interaction, one of the species lives at the expense of the other species. Similar to  
292 predators, parasites can impose strong selection pressures on their hosts, for example resulting in the  
evolution of defences that can in turn impose selection on parasite traits. This process can lead to

294 complex co-evolutionary dynamics in spatial and non-spatial settings. Host-parasite interactions are  
often characterised by overlapping time scales between epidemiological and evolutionary processes owing  
296 to the rapid evolution of those systems. Yet, even when evolution is slower than the spread of disease,  
selection in host-parasite systems is characterised by strong density-dependent feedbacks, where changes  
298 in densities affect selection pressures on transmission, virulence and other parasite traits (eco-to-evo),  
and the resulting trait changes in turn alter the ecological dynamics (evo-to-eco; Luo & Koelle, 2013,  
300 Fig. 4C).

The study of virulence evolution in parasites and pathogens is a key topic in the theoretical literature  
302 involving EEFs. The seminal work of Anderson & May (1982) showed that pathogen evolution is shaped  
by the epidemiological dynamics of infectious diseases through the density of susceptible hosts. Since  
304 then, a large literature has been devoted to understanding the effect of EEFs on the evolution of parasite  
virulence and host resistance (e.g. Lenski & May, 1994; Van Baalen, 1998; Boots & Haraguchi, 1999;  
306 Dieckmann *et al.*, 2002; Frickel *et al.*, 2016; Lion & Metz, 2018). Most models of host-parasite EEFs use  
classical epidemiological models (compartment models that include susceptible, infected and potentially  
308 recovered individuals; SIR models) to describe the changes in density or frequency of susceptible and  
infected hosts. These epidemiological models are then coupled with AD (Dieckmann *et al.*, 2002; Lion &  
310 Metz, 2018) or QG (e.g., Day & Proulx, 2004; Day & Gandon, 2007) approaches.

In the wake of Anderson & May (1982)'s seminal work, many studies have focused on the evolution of  
312 pathogen traits, under the assumption that host evolution is much slower and can be neglected. This has  
led to a good understanding of how EEFs affect pathogen evolution. A key insight is that, even if the host  
314 is assumed not to evolve, the time scales between ecology and evolution may either be decoupled (e.g.,  
the pathogen evolves while the population is at an endemic equilibrium, see e.g. Dieckmann *et al.* (2002);  
316 Lion & Metz (2018) for a review of AD approaches) or overlap (e.g., when the pathogen evolves during an  
epidemic, see e.g.<sup>412004</sup>Day & Proulx,<sup>402007</sup>Day & Gandon for a QG formalism). What governs the difference  
318 in time scales between epidemiology and pathogen evolution will then be the amount of standing genetic  
variation or the mutation rate.

320 More generally, coevolution between hosts and parasites with overlapping generation times has been  
studied (Nuismer *et al.*, 2008; Eizaguirre *et al.*, 2009; Best *et al.*, 2010), in particular in the local adaptation  
322 literature (Nuismer *et al.*, 2008), but often under the restrictive assumption of fixed demography, which  
sets strong limits to the types of EEFs that are possible. In contrast, other studies of coevolution  
324 have demonstrated how the dimension of the environment plays a critical role in governing evolutionary  
branching and diversification in both the host and the pathogen (Best *et al.*, 2010). However, the study  
326 of EEFs in co-evolutionary host-parasite system remains underdeveloped. Interestingly, those systems  
appear to be particularly amenable to experiments and should allow researchers to further tease apart

328 the underlying effects of EEFs. For example, (Brunner *et al.*, 2017) demonstrated that the sole presence  
of a fish parasite in an experimental ecosystem alters the abiotic environment of the host in terms of  
330 nutrient content or dissolved oxygen. These altered environments were shown to impose selection on  
a subsequent generation of hosts, hence evidencing that macroparasites can mediate eco-evolutionary  
332 feedbacks between fish and their environment.

Host-parasite interactions have also played a crucial role towards understanding spatial EEFs (e.g.,  
334 Boots & Sasaki, 1999; Boots *et al.*, 2004, reviewed in Lion & Gandon 2015). These studies have often  
modelled space as a regular network of sites, in which each site is either empty or contains a single host  
336 individual, which can be either susceptible or infected. Such models can easily be analysed using IBMs,  
but analytical insight is also possible to some extent, using either AD or QG (Lion & Gandon, 2016). Due  
338 to the inherent complexity of spatial models, however, we only have a partial understanding of how the  
feedback between spatial epidemiological dynamics and the evolution of host and parasite traits unfolds  
340 in more realistic host-parasite interactions (but see Nuismer *et al.*, 2000, 2003). In summary, the host-  
parasite literature has a long tradition of studying EEFs. Methodological approaches differ depending  
342 on the level of complexity, from simple ODEs to IBMs.

#### 4.4 Mutualistic interactions

344 A mutualistic interaction implies that the interaction is beneficial for both partners involved (e.g., plant-  
pollinator or host-symbiont interaction). EEFs in the context of mutualisms are expected to strongly  
346 impact the co-evolutionary process between mutualists and exploiters (eco-to-evo) which in turn shapes  
the ecological dynamics of the system (evo-to-eco; Fig. 4D; Doebeli & Knowlton 1998; Jones *et al.* 2009).

348 EEFs were found to play an important role in determining phenotypic and population outcomes in an  
AD model on the coevolution of mutualists and exploiters when long-term coexistence of the species was  
350 possible (Jones *et al.*, 2009). In the model by Jones *et al.* (2009), birth rates of the mutualist and exploiter  
were assumed to evolve and determine the nature of the mutualistic interaction. Ferrière *et al.* (2002)  
352 constructed a mathematical model combining simple Lotka-Volterra equations describing the ecological  
mutualistic interactions between the two species, with differential equations describing the evolutionary  
354 dynamics of the mutualistic traits. These evolutionary dynamics follow the fitness gradient shaped by  
the underlying ecological dynamics (eco-to-evo), which in turn determine the benefit of the mutualistic  
356 interaction (evo-to-eco)[Fig. 4D].

Fewer studies have investigated the effect of spatial heterogeneity on mutualistic interactions, but  
358 those that have show that spatial heterogeneity can lead to long-term persistence of mutualism (e.g.,  
Doebeli & Knowlton, 1998). Overall, mutualistic interactions in an eco-evolutionary context have been  
360 studied less compared to the other three interactions types discussed earlier. Nevertheless, studies have



shown that EEFs may play an important role for this type of interaction.

## 5 EEFs in a community and ecosystem context

The increasing interest in more complex ecological settings has resulted in a rapid growth of models focusing on communities and ecosystems that could simultaneously incorporate evolutionary dynamics (Brännström *et al.*, 2012). Such models extend previous work to include niche construction, plant-soil feedbacks, multiple-species communities and foodwebs.

### 5.1 Feedbacks between organisms and abiotic environments

EEFs with the environment have been studied in the context of niche construction (Odling-Smee *et al.*, 2003; Lehmann, 2008; Kylafis & Loreau, 2011), as in plant-soil feedbacks, for example (Schweitzer *et al.*, 2014; Ware *et al.*, this issue, Fig. 5A). Game theory has been used to investigate selection on niche constructing phenotypes (Lehmann, 2008) where the feedback arises when individuals affect their environment by reproducing (evo-to-eco), hence altering the selection pressure on the population (eco-to-evo). In plant-soil systems, plants might adaptively regulate soil fertility, resulting in positive, self-sustaining nutrient feedbacks that influence evolution. For example, increasing the direct benefit of soil nutrient conditioning to plants has been predicted to increase selection for higher values of soil conditioning traits (Kylafis & Loreau, 2008). Implicit in this model is a genetically based plant trait that links plants with their soils. Subsequent models have shown that these genetically based plant-soil links can result in EEFs depending on the match with the soil gradient and the genetic variation present in the environment–altering plant trait (Schweitzer *et al.*, 2014).

In plant-soil systems evolutionary change in plant traits can influence ecological dynamics of soil microbes (evo-to-eco) which in turn can change selection pressures on plant traits (eco-to-evo). This can be investigated using IBMs (Schweitzer *et al.*, 2014) or by using an extended version of classical resource-competition models (Eppinga *et al.*, 2011). In this specific model, the decomposition of litter releases nutrients that can be taken up by the plants influencing competitive ability of the plant (eco-to-evo), resulting in different plant genotypes that might grow better. The change in the genetic composition of the plant population can in turn influence the litter pool (evo-to-eco).

In analogy to negative niche construction (Odling-Smee *et al.*, 2003), the spatial structure of local negative feedbacks can result in changes in local diversity (e.g., Loeuille & Leibold, 2014). The environment becomes less suitable for the species occupying it (evo-to-eco), which induces a change in selection pressure on the species to evolve toward a more matching trait-environment value (eco-to-evo). Overall, plant-soil interactions are good examples of niche construction whereby EEFs can both be modelled and

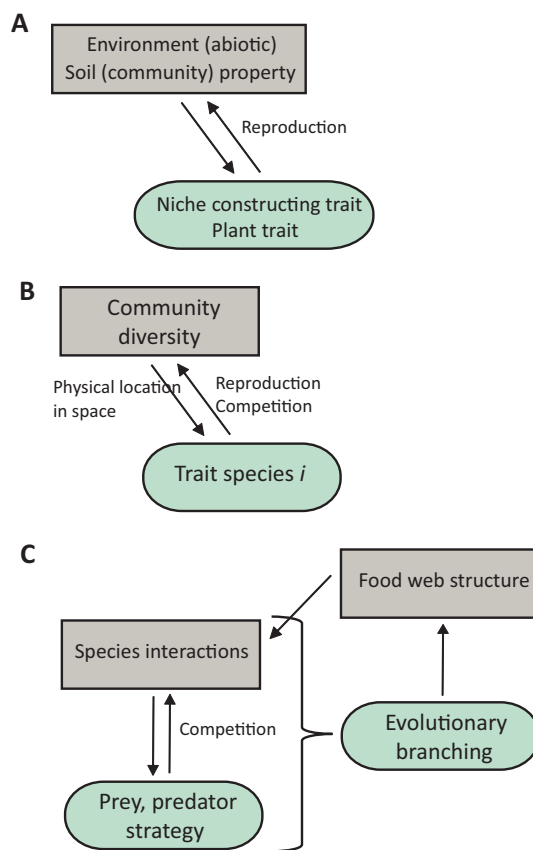


Figure 5: Examples of studies in which feedbacks occur between abiotic and biotic component or in a multi-species settings. (A) General figure of EEFs in niche construction (Lehmann, 2008; Kylafis & Loreau, 2011) and plant-soil feedbacks (Schweitzer *et al.*, 2014). In niche construction the abiotic environment determines the evolution of a trait that modifies this abiotic environment. Similarly, in a plant-soil system, a plant trait can modify the soil, which drives evolution of plant traits. (B) Study by Martín *et al.* (2016) in which trait values and spatial locations species determine competition, changing local selection pressures, resulting in shifting local and global trait distributions and community diversity. (C) Study by Ito & Ikegami (2006), in which each species has a separate prey and predator strategy which results in clusters of trophic species arising from changing interactions between species, which in turn continuously change the position, shape and size of occupied areas in phenotypic space and change trophic interactions resulting in further phenotypic evolution and eventually evolutionary branching and the emergence of foodweb structure.

392 observed in nature. The methods employed range from formal mathematical approaches to IBMs.

## 5.2 Feedbacks within communities

394 Theoretical studies on EEFs in multi-species communities can increase our understanding of biodiversity (Patel *et al.*, 2018). Eco-evolutionary analyses have led to new insights into coexistence theory, the  
 396 maintenance of diversity, as well as the structure and stability of communities (Kremer & Klausmeier, 2017; Patel *et al.*, 2018). Moreover, studies have found that evolution might maintain (Martín *et al.*,  
 398 2016), increase (e.g. via speciation or ER Rosenzweig, 1978; Dieckmann & Doebeli, 1999; Gomulkiewicz & Holt, 1995) or decrease (Norberg *et al.*, 2012; Kremer & Klausmeier, 2013; Gyllenberg *et al.*, 2002)

400 phenotypic, species and functional diversity.

For example, Martín *et al.* (2016) show that EEFs can maintain phenotypic diversity. The authors  
402 combine niche based approaches with neutral theory in a spatially structured IBM where each individ-  
ual has a location in space and is constrained by a specific trade-off between resource exploitation and  
404 competition. Similar individuals experience higher competition resulting in frequency-dependent selec-  
tion. Competition only takes place between neighbouring individuals, changing local selection pressures,  
406 which results in local evolutionary shifts in phenotypic traits (eco-to-evo) that shift the global pheno-  
typic trait distribution and influence species differentiation and thus community diversity (evo-to-eco;  
408 Fig. 5B). By contrast, Norberg *et al.* (2012) found that the eco-evolutionary processes induced by cli-  
mate change continued to generate species extinctions long after the climate had stabilized, and thus  
410 resulted in further diversity loss. These authors used a spatially explicit eco-evolutionary model based on  
partial differential equations to predict species responses to climate change in a multi-species context in  
412 which they allowed genetic variation and dispersal to jointly influence ecological (competition and species  
sorting) and evolutionary (adaptation) processes. The findings of both studies discussed above can eas-  
414 ily be understood in the light of modern coexistence theory (reviewed in Chesson, 2000) as they relate  
to stabilizing (concentrating intraspecific interaction by dispersal limitation) and equalising mechanisms  
416 (sorting). In summary, EEFs in communities emerge, because species' traits may affect the community  
and, vice versa, the community context may affect trait evolution (terHorst *et al.*, 2018). Interestingly,  
418 fitness may not only depend on densities, but also on total community biomass, total productivity, or  
even on species richness. Consequences of evolutionary change can be understood in the light of modern  
420 coexistence theory.

### 5.3 Feedbacks in food webs

422 Evolutionary dynamics have been suggested to determine food web structure (Rossberg *et al.*, 2006).  
Hence, there has been an upsurge in studies including evolutionary dynamics into food web models, by  
424 allowing a recurrent addition of new species or morphs into the food web, based on the theory of self-  
organized criticality (Bak *et al.*, 1987; Caldarelli *et al.*, 1998; Drossel *et al.*, 2001; Rossberg *et al.*, 2006;  
426 Allhoff & Drossel, 2013; Bolchoun *et al.*, 2017). These evolutionary food web models often depend on  
a trait that shapes the biotic interactions which determine the food web structure. Food web structure  
428 selects the species that remain in the system (eco-to-evo), which in turn alters the phenotypic trait  
distribution in the system on which mutations can occur to create a new species or morphs. The addition  
430 of a new species or morph changes the present species interactions (evo-to-eco), hence changing the food  
web structure (Bolchoun *et al.*, 2017). This interplay between population dynamics and morph evolution  
432 determines the EEF, and shapes the structure of the food web. Similar to the AD framework, it is

assumed that ecological dynamics occur fast and reach (quasi)equilibrium, while evolutionary dynamics  
434 occur on a much slower time scale (Guill & Drossel, 2008; Allhoff & Drossel, 2013). Studies including  
both ecological and evolutionary processes in food web models show that this can lead to new insights in  
436 food web dynamics as opposed to models that only include fixed ecological dynamics (Bolchoun *et al.*,  
2017).

438 Most studies on food web models focus on speciation-extinction dynamics with species being the  
unit of the model, while fewer studies have investigated how the evolution of traits results in food web  
440 formation (Ito & Ikegami, 2006; Takahashi *et al.*, 2013). Both Ito & Ikegami (2006) and Takahashi *et al.*  
(2013) have modelled the built up of a food web through evolutionary dynamics by attributing to each  
442 individual or phenotype a prey and predator trait (resource or vulnerability, respectively, utilization or  
foraging). Individuals are assumed to reproduce asexually and offspring may differ slightly because of  
444 small random mutations. Ito & Ikegami (2006) show that isolated phenotypic clusters of species and  
the emergence of higher trophic levels arise due to changing interactions between species (eco-to-evo),  
446 which in turn continuously changes the position, shape and size of occupied areas in phenotypic space.  
These changes, in turn, alter trophic interactions (evo-to-eco) resulting in further phenotypic evolution  
448 and eventually evolutionary branching (Fig. 5C). Takahashi *et al.* (2013) used an IBM to show that  
initial phenotypic divergence in the foraging trait relaxes interference competition (eco-to-evo), which  
450 results in the emergence of species clusters. The resulting changes in species interactions (trophic levels;  
evo-to-eco) mediate further divergence in foraging traits and predator vulnerability (eco-to-evo). A study  
452 by de Andreazzi *et al.* (2018) explicitly evaluated the effects of network structure on eco-evolutionary  
dynamics for long-term ecological network stability, by using different antagonistic species networks in  
454 their simulations. Population dynamics were modelled to depend on the phenotypic trait, while mean  
trait evolution depended on the environment and the antagonistic species interactions. The authors  
456 showed that EEFs resulted in specific patterns of specialization which led to increases in species mean  
abundances and to decreases in temporal variation in abundances.

458 The effects of spatial dynamics on food web structure has also been studied. For example, (Loeuille &  
Leibold, 2008), combined a simple food web structure (specialist and generalist herbivore species feeding  
460 on two plants which in turn feed on nutrient resources), with a 12-patch metacommunity to evaluate  
the interactions between evolutionary adaptation and community assembly dynamics as a function of  
462 dispersal. The two plant species had quantitative and qualitative defence traits that were heritable,  
upon occurrence of small mutations between each time steps. The authors found that the occurrence of  
464 dispersal between patches led to the evolution of distinct morphs of the plant species (eco-to-evo), which  
influenced the trophic and food web structure in local patches (evo-to-eco).

466 Overall, while evolutionary food web models have all elements present for EEFs to occur, an explicit

analysis of these feedbacks remains rare. This is probably due to the main assumption of the separation of  
468 time scales of ecology and evolution, with mutation being considered equivalent to speciation Takahashi  
*et al.* (2013), and traits remaining constant within species. Exceptions exist of course, such as the food  
470 web model used by Loeuille & Leibold (2008). However, especially meta-foodweb models are scarce  
(Urban *et al.*, 2008) Evolutionary food web models have promising features that may result in a better  
472 understanding of EEFs in more complex (natural) scenarios and likely represent one of the current major  
challenges in eco-evolutionary modelling (Melián *et al.*, 2018).

## 474 6 Synthesis and conclusions

Throughout this overview, we found that EEFs have been incorporated into theoretical models across a  
476 wide range of different levels of biological organization. The relevance of the EEF may not only depend  
on the biological system, but also on the specific traits used: different effects may be found depending  
478 on whether the trait is influenced by the ecological property or not (e.g., density-dependent versus -  
independent traits). Not surprisingly, including EEFs in theoretical models significantly changes our  
480 view of well-known patterns emerging from pure ecological or pure evolutionary models (e.g., Dieckmann  
& Metz, 2006; Poethke *et al.*, 2011). More specifically, we have identified models that include EEFs, whose  
482 underlying formalisms fall into a few categories (Fig. 1B). In principle, any modelling framework that  
couples ecological dynamics (e.g., ODEs, IBMs) with an evolutionary model (e.g., QG, AD or GA) can be  
484 useful for studying feedbacks. Studies modelling intertwined ecological and evolutionary dynamics most  
often differ in their assumption of the time scale at which ecological and evolutionary processes occur.  
486 Studies assuming contemporary ecological and evolutionary dynamics often couple ODEs with QG or  
use IBMs, while studies assuming evolution to occur when ecological dynamics are at equilibrium couple  
488 demographic models with AD to make analogous assumptions.

### 6.1 Conclusions to date

490 Based on our non-exhaustive overview of theoretical work on EEFs, a few general conclusions emerge:  
First, EEF models explicitly include ecological dynamics in the analyses of evolutionary processes, and  
492 vice versa. Density- and frequency-dependent selection are often key ingredients for EEFs. In many  
cases, density- and frequency-dependency, as well as ecological stochasticity are not a priori assumptions,  
494 but emerge from ecological settings and trait correlations, for example. Second, EEFs are not new to  
evolutionary ecology theory — they are deeply rooted in the theory of many subdisciplines. For instance,  
496 the predator-prey and host-parasite literature, speciation literature and evolutionary branching, character  
displacement, as well as metapopulation modelling or niche construction theory naturally incorporate

498 EEFs. Strikingly, while the field of (meta)community ecology is rather new (Leibold *et al.*, 2004), EEFs  
seem to have been included in (meta)community ecology very rapidly, culminating in the recognition  
500 that the basic drivers of evolution and community ecology are analogous (Vellend, 2010). Third, in a  
spatial setting dispersal is a primary candidate for successful eco-evolutionary linkages, because dispersal  
502 is both an ecological process impacting densities and, at the same time, mediates evolution via gene  
flow. In addition, it is itself subject to evolution (Ronce, 2007). Movement can be similarly important  
504 (Hillaert *et al.*, 2018). Fourth, EEFs do not necessarily require rapid or contemporary evolution (Post  
& Palkovacs, 2009). Of course, contemporary evolution has sparked a lot of interest in EEFs (Hendry,  
506 2017), but feedbacks are also possible over longer timescales (e.g., as shown in AD models). Fifth, our  
short overview of the eco-evolutionary modelling toolbox clearly highlights that the main character of  
508 an eco-evolutionary model is the combination of demographic and evolutionary models, regardless of the  
concrete formalism.

510 Because different formalisms originate from different fields, they often rely on differing assumptions.  
For instance, the time scales on which processes occur and the sources of genetic variation are important  
512 consideration of the different modelling formalisms (Lande, 2007; Sæther & Engen, 2015). This has made  
some formalisms more focussed on analysing evolutionary end-points and long-term dynamics (AD), while  
514 others have focused on short-term dynamics from one generation to the next (QG). However, in both  
formalisms incorporating EEFs is feasible. The separation of time scales also means that the form of  
516 the feedback may change when we move from one dynamical regime to the other, which has been well  
studied in host-parasite models (Lenski & May, 1994; Day & Gandon, 2007; Gandon & Day, 2009; Lion,  
518 2018). However, most interest probably lies in predicting the mid-term dynamics of an EEF system.  
To approach this properly, an important issue for future theoretical work will be to develop mechanistic  
520 models for the dynamics of phenotypic and genotypic variation in populations evolving at this mid-term  
time scale of tens to hundreds of generations (see Fig. 6 for an individual-based perspective). This would  
522 reveal for instance whether EEFs are time dependent and how common they are expected to be. However,  
to couple these models to natural systems, one needs to measure heritability and genetic (co)variances of  
524 traits which can be challenging.

Our review also underlines the pervasive nature of EEFs. It seems at best difficult to design a model  
526 that includes ecology and evolution without an EEF (see also Hendry, 2017, chapter 1 for a discussion).  
However, it is possible that some traits have little effect on the ecological dynamics, or that some ecological  
528 variables will have little effect on the evolutionary dynamics. For instance, in a discrete-time model, if  
absolute fitness is proportional to a function of density, say  $W_i(t) = b_i f(N_t)$ , then relative fitness will  
530 not depend on  $N_t$ , so we can say that EEFs do not matter for evolution in this specific case. In models  
where an optimisation principle holds (sensu Metz *et al.*, 2008), we also have very simple ecological and

532 evolutionary dynamics: the focal trait average steadily increases and resource density decreases until a  
maximum (resp. minimum) is reached. Such simplistic EEFs have been termed frequency-independence in  
534 the broad sense by Metz & Geritz (2016). Overall, recent models have become more elaborate. However,  
increased complexity and realism often trades off with tractability. As a consequence these studies must  
536 provide additional tests that either involve models where the presumed feedback is absent, or provide a  
simplified analytical model (e.g., Kubisch *et al.*, 2016; Branco *et al.*, 2018, for examples involving IBMs).

## 538 6.2 The way forward

The challenge today consists in pursuing new, more integrative and mechanistic modelling avenues which  
540 have the potential to include different aspects of realism, such as genotype-phenotype mapping, plasticity  
as well as population and spatial structure (Fig. 6) and predicts of mid-term dynamics of EEFs as  
542 outlined above. Current theory has greatly increased our understanding of EEFs (McPeck, 2017), but  
these feedbacks have been primarily explored within hierarchical levels of ecosystem organization, be  
544 they spatial or temporal hierarchies, and have often involved only single or a few independently evolving  
traits. While the presence of a hierarchical organization of ecosystems is well established (Melián *et al.*,  
546 2018), it is an ongoing challenge to identify the relevant hierarchical levels and their interdependencies  
to understand EEFs.

548 Currently, the leading graphical model adopts an implicit hierarchy with feedbacks between levels  
from genes, to traits, to populations, to communities, to ecosystem processes (Hendry, 2017, see also  
550 Fig. 1A for a simplification). Making such a conceptual model more mechanistic requires understanding  
how interactions at one scale (gene regulatory networks or complex traits) affect processes at different  
552 scales (trait-dependent species interactions). One such modelling attempt by Melián *et al.* (2018) links  
ecological and evolutionary networks in a meta-ecosystem model, taking into account demography, trait  
554 evolution, gene flow, and the ecological dynamics of natural selection. Such process-based models can  
yield new insights into the mechanistic basis of EEFs in more complex natural scenarios. Some of the most  
556 important processes are summarized in Fig. 6 which expands the conceptual model presented in Fig. 1A to  
a more mechanistic level. With this representation we propose that feedbacks are best conceptualized as  
558 emerging from individual-level interactions (see also Rueffler *et al.*, 2006), with dispersal and interactions  
with the abiotic environment leading to the emergence of the relevant hierarchical complexity.

560 Besides theoretical advances, connecting theory to controlled laboratory or field experiments more  
tightly will allow for the experimental assessment of theoretical predictions about feedbacks. For exam-  
562 ple, using rotifer-algae chemostats Yoshida *et al.* (2003) experimentally tested predictions of a theoretical  
predator-prey model that allowed for prey evolution. This experiment confirmed the anti-phase oscil-  
564 lations predicted from theory when prey evolves defence strategies. While such prominent examples of

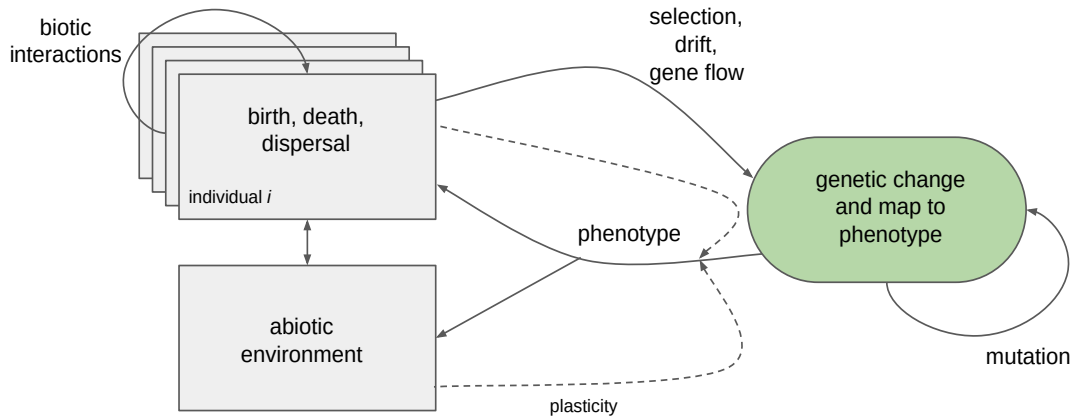


Figure 6: Mechanistic underpinnings of EEFs. Ecological dynamics (left) are driven by individual-level properties (birth, death, dispersal). Interactions between individuals of the same or different species (biotic interactions) impact these properties, which may lead to density-dependence, for example. Individuals interact with the abiotic environment and vice versa. Importantly, these ecological settings will impact selection, drift and migration (eco-to-evo). Evolution is governed by the interaction between these processes, genetic constraints and mutations. The resulting phenotype is subsequently determined by the genotype-phenotype map. Ultimately, the phenotype will impact ecology (evo-to-eco) by changing births, death, dispersal and the abiotic environment. Plasticity (dashed lines) may modulate the phenotype and, hence, the dual effects of the organism on biotic and abiotic environments.

the integration of theory and empirical data on EEFs exist (see among others also, Metcalf *et al.*, 2008; Litchman *et al.*, 2009; Becks *et al.*, 2012; Thomas *et al.*, 2012; Fischer *et al.*, 2014; Fronhofer & Altermatt, 2015; Huang *et al.*, 2017; Bonte & Bafort, this special issue; De Meester *et al.*, this issue; Van Nuland *et al.*, this issue) given the breadth of the theoretical work highlighted here, the coupling of empirical data from natural and experimental settings, with theoretical models needs to be deepened. This gap between theory and empirical work may, in part, be due to differences in technical jargon that impede effective communication between theoreticians and empiricists as well as modelling specializations among theoreticians which impede synthesis or at least slow down progress. Isolation among subdisciplines and methods leads to confusion, reduced inference and will not advance the field. In the latter case, efforts such as those of Queller (2017) and Lion (2018) at unifying theoretical fields are urgently needed. To advance theory on EEFs, we here suggest that taking a mechanistic approach focused on individual-level traits (Rueffler *et al.*, 2006) as outlined in Fig. 6 can be productive for developing novel and synthetic theory. Key ingredients to such an individual-level approach is the description of focal organisms in terms of individual properties (age, ecologically important traits, life history parameters), and linking these to demographic processes (see also Travis *et al.*, 2014). Most importantly, scientists need to appreciate the strengths of their respective approaches, be they theoretical, experimental laboratory-based or comparative, and not focus on the weaknesses to discard possible avenues of collaboration and progress.

Clearly, bridging between theory and empirical data is more difficult when studying ecology and evolution in the wild (Hendry, this issue) and ecological pleiotropy may even cancel out EEFs (DeLong, 2017).



584 However, theoretical models are the best avenue to formulate hypotheses and generate testable predictions  
which strengthens inference. We suggest that a three-way approach, integrating theory, laboratory-based  
586 experiments and comparative data from natural communities will enhance our understanding on how  
prevalent EEFs are in nature. This knowledge will also be critical for communicating the importance of  
588 EEFs to policy makers. In this context, it is central to know how feedbacks affect biodiversity dynamics,  
whether the evolution of resistance may be faster with or without feedbacks, or whether population size  
590 can be better controlled by modifying certain components of feedbacks, to name but a few examples.  
Understanding the dynamical consequences of EEF is more important than ever in a rapidly changing  
592 world.

## References

- 594 Abrams, P.A. (1986) Character displacement and niche shift analyzed using consumer-resource models  
of competition. *Theor. Popul. Biol.* **29**, 107–160.
- 596 Abrams, P.A. (1990) Ecological vs. evolutionary consequences of competition. *Oikos* **57**, 147–151.
- Abrams, P.A. (2000) The evolution of predator-prey interactions: theory and evidence. *Annu. Rev. Ecol.*  
598 *Evol. Syst.* **31**, 79–105.
- Abrams, P.A., Harada, Y. & Matsuda, H. (1993) On the relationship between quantitative genetic and  
600 ess models. *Evolution* **47**, 982–985.
- Abrams, P.A. & Matsuda, H. (1997) Prey adaptation as a cause of Predator-Prey cycles. *Evolution* **51**,  
602 1742–1750.
- Aguilée, R., Claessen, D. & Lambert, A. (2013) Adaptive radiation driven by the interplay of eco-  
604 evolutionary and landscape dynamics. *Evolution* **67**, 1291–1306.
- Allhoff, K.T. & Drossel, B. (2013) When do evolutionary food web models generate complex networks?  
606 *J. Theor. Biol.* **334**, 122–129.
- Alonzo, S.H. & Sinervo, B. (2001) Mate choice games, context-dependent good genes, and genetic cycles  
608 in the side-blotched lizard, *Uta stansburiana*. *Behav. Ecol. Sociobiol.* **49**, 176–186.
- Anderson, R.M. & May, R. (1982) Coevolution of hosts and parasites. *Parasitology* **85**, 411–426.
- 610 Bailey, J.K. & Schweitzer, J.A. (2016) The rise of plant–soil feedback in ecology and evolution. *Funct.*  
*Ecol.* **30**, 1030–1031.

- 612 Bak, P., Tang, C. & Wiesenfeld, K. (1987) Self-organized criticality: An explanation of the 1/f noise.  
*Phys. Rev. Lett.* **59**, 381.
- 614 Becks, L., Ellner, S.P., Jones, L.E. & Hairston, N.G. (2012) The functional genomics of an eco-  
evolutionary feedback loop: linking gene expression, trait evolution, and community dynamics. *Ecol.*  
616 *Lett.* **15**, 492–501.
- Becks, L., Ellner, S.P., Jones, L.E. & Hairston Jr, N.G. (2010) Reduction of adaptive genetic diversity  
618 radically alters eco-evolutionary community dynamics. *Ecol. Lett.* **13**, 989–997.
- Best, A., White, A., Kisdi, E., Antonovics, J., Brockhurst, M. & Boots, M. (2010) The evolution of  
620 host-parasite range. *Am. Nat.* **176**, 63–71.
- Boeye, J., Travis, J.M.J., Stoks, R. & Bonte, D. (2013) More rapid climate change promotes evolutionary  
622 rescue through selection for increased dispersal distance. *Evol. Appl.* **6**, 353–364.
- Bolchoun, L., Drossel, B. & Allhoff, K.T. (2017) Spatial topologies affect local food web structure and  
624 diversity in evolutionary metacommunities. *Sci. Rep.* **7**, 1818.
- Bonte, D. & Bafort, Q. (this special issue) The importance and adaptive value of life history evolution  
626 for metapopulation dynamics. *J. Anim. Ecol.* .
- Boots, M. & Haraguchi, Y. (1999) The evolution of costly resistance in host-parasite systems. *Am. Nat.*  
628 **153**, 359–370.
- Boots, M., Hudson, P. & Sasaki, A. (2004) Large shifts in pathogen virulence relate to host population  
630 structure. *Science* **303**, 842–844.
- Boots, M. & Sasaki, A. (1999) ‘Small worlds’ and the evolution of virulence: infection occurs locally and  
632 at a distance. *Proc. R. Soc. B-Biol. Sci.* **266**, 1933–1938.
- Branco, P., Egas, M., Elser, J.J. & Huisman, J. (2018) Eco-evolutionary dynamics of ecological stoi-  
634 chiometry in plankton communities. *Am. Nat.* **192**, na–na.
- Brännström, A., Johansson, J., Loeuille, N., Kristensen, N., Troost, T.A., Lambers, R.H.R. & Dieckmann,  
636 U. (2012) Modelling the ecology and evolution of communities: a review of past achievements, current  
efforts, and future promises. *Evol. Ecol. Res.* **14**, 601–625.
- 638 Brown, W.L. & Wilson, E.O. (1956) Character displacement. *Syst. Zool.* **5**, 49–64.
- Bruggeman, J. & Kooijman, S.A.L.M. (2007) A biodiversity-inspired approach to aquatic ecosystem  
640 modeling. *Limnol. Oceanogr.* **52**, 1533–1544.

- 642 Brunner, F.S., Anaya-Rojas, J.M., Matthews, B. & Eizaguirre, C. (2017) Experimental evidence that  
parasites drive eco-evolutionary feedbacks. *Proc. Natl. Acad. Sci. U. S. A.* **114**, 3678–3683.
- 644 Burger, R. & Lynch, M. (1995) Evolution and extinction in a changing environment: a quantitative-  
genetic analysis. *Evolution* pp. 151–163.
- 646 Burton, O.J., Phillips, B.L. & Travis, J.M.J. (2010) Trade-offs and the evolution of life-histories during  
range expansion. *Ecol. Lett.* **13**, 1210–1220.
- 648 Caldarelli, G., Higgs, P.G. & McKane, A.J. (1998) Modelling coevolution in multispecies communities.  
*J. Theor. Biol.* **193**, 345–358.
- Caswell, H. (2006) *Matrix Population Models*. Sinauer.
- 650 Chesson, P. (2000) Mechanisms of maintenance of species diversity. *Annu. Rev. Ecol. Syst.* **31**, 343–366.
- 652 Chesson, P. (2017) Aedt: A new concept for ecological dynamics in the ever-changing world. *PLoS Biol.*  
**15**, e2002634.
- 654 Chevin, L.M., Cotto, O. & Ashander, J. (2017) Stochastic evolutionary demography under a fluctuating  
optimum phenotype. *Am. Nat.* **190**, 786–802.
- 656 Chitty, D. (1967) The natural selection of self-regulatory behaviour in animal populations. *Proc. Ecol.*  
*Soc. Aust.* **2**, 51–78.
- Clarke, B. (1972) Density-dependent selection. *Am. Nat.* **106**, 1–13.
- 658 Clobert, J., Baguette, M., Benton, T.G. & Bullock, J.M. (2012) *Dispersal Ecology and Evolution*. Oxford  
University Press, Oxford, UK.
- 660 Cortez, M.H. (2016) How the magnitude of prey genetic variation alters Predator-Prey Eco-Evolutionary  
dynamics. *Am. Nat.* **188**, 329–341.
- 662 Cortez, M.H. & Ellner, S.P. (2010) Understanding rapid evolution in predator-prey interactions using the  
theory of fast-slow dynamical systems. *Am. Nat.* **176**, E109–E127.
- 664 Cortez, M.H. & Weitz, J.S. (2014) Coevolution can reverse predator-prey cycles. *Proc. Natl. Acad. Sci.*  
*U. S. A.*
- 666 Day, T. (2005) Modelling the ecological context of evolutionary change: déjà vu or something new?  
*Ecological paradigms lost: routes of theory change* (ed. B. Beisner), Elsevier Academic Press.
- 668 Day, T. & Gandon, S. (2007) Applying population-genetic models in theoretical evolutionary epidemiol-  
ogy. *Ecol. Lett.* **10**, 876–888.

- 670 Day, T. & Proulx, S.R. (2004) A general theory for the evolutionary dynamics of virulence. *Am. Nat.*  
**163**, E40–E63.
- 672 de Andreatzi, C.S., Guimarães, P.R. & Melián, C.J. (2018) Eco-evolutionary feedbacks promote fluctuating selection and long-term stability of antagonistic networks. *Proc. R. Soc. B-Biol. Sci.* **285**,  
674 20172596.
- De Meester, L., Brans, K., Govaert, L., Souffreau, C., Mukherjee, S., Korzeniowski, K., Kilsdonk, L.,  
676 Decaestecker, E., Stoks, R. & Urban, M. (this issue) The challenging complexity of analyzing eco-evolutionary dynamics in nature. *Funct. Ecol.*
- 678 DeAngelis, D.L. & Mooij, W.M. (2005) Individual-based modeling of ecological and evolutionary processes. *Annu. Rev. Ecol. Evol. Syst.* **36**, 147–168.
- 680 DeLong, J.P. (2017) Ecological pleiotropy suppresses the dynamic feedback generated by a rapidly changing trait. *Am. Nat.* **189**, 592–597.
- 682 Dhondt, A.A. (1989) Ecological and evolutionary effects of interspecific competition in tits. *The Wilson Bulletin* pp. 198–216.
- 684 Dieckmann, U. & Doebeli, M. (1999) On the origin of species by sympatric speciation. *Nature* **400**, 354–357.
- 686 Dieckmann, U. & Metz, J.A.J. (2006) Surprising evolutionary predictions from enhanced ecological realism. *Theor. Popul. Biol.* **69**, 263–281.
- 688 Dieckmann, U., Metz, J.A.J., Sabelis, M.W. & Sigmund, K. (eds.) (2002) *Adaptive dynamics of infectious diseases. In pursuit of virulence management*. Cambridge University Press, Cambridge, UK.
- 690 Dieckmann, O. (2004) A beginner’s guide to adaptive dynamics. *Mathematical Modelling Of Population Dynamics – Banach Center Publications* **63**, 47–86.
- 692 Doebeli, M. & Knowlton, N. (1998) The evolution of interspecific mutualisms. *Proc. Natl. Acad. Sci. U. S. A.* **95**, 8676–8680.
- 694 Drossel, B., Higgs, P.G. & McKane, A.J. (2001) The influence of predator–prey population dynamics on the long-term evolution of food web structure. *J. Theor. Biol.* **208**, 91–107.
- 696 Eizaguirre, C., Lenz, T.L., Traulsen, A. & Milinski, M. (2009) Speciation accelerated and stabilized by pleiotropic major histocompatibility complex immunogenes. *Ecol. Lett.* **12**, 5–12.

- 698 Ellner, S. & Becks, L. (2011) Rapid prey evolution and the dynamics of two-predator food webs. *Theor. Ecol.* **4**, 133–152.
- 700 Engen, S., Lande, R. & Sæther, B.E. (2013) A quantitative genetic model of r-and k-selection in a fluctuating population. *Am. Nat.* **181**, 725–736.
- 702 Engen, S. & Sæther, B.E. (2017) r-and k-selection in fluctuating populations is determined by the evolutionary trade-off between two fitness measures: Growth rate and lifetime reproductive success. *Evolution* **71**, 167–173.
- 704
- Eppinga, M.B., Kaproth, M.A., Collins, A.R. & Molofsky, J. (2011) Litter feedbacks, evolutionary change and exotic plant invasion. *J. Ecol.* **99**, 503–514.
- 706
- Ferrière, R. (2000) Adaptive responses to environmental threats: evolutionary suicide, insurance, and rescue. *Options Spring* **2000**, 12–16.
- 708
- Ferrière, R., Bronstein, J.L., Rinaldi, S., Law, R. & Gauduchon, M. (2002) . cheating and the evolutionary stability of mutualisms. *Proc. R. Soc. B-Biol. Sci.* **269**, 773–780.
- 710
- Ferrière, R., Dieckmann, U. & Couvet, D. (2004) *Evolutionary conservation biology*, vol. 4. Cambridge University Press.
- 712
- Ferrière, R. & Legendre, S. (2012) Eco-evolutionary feedbacks, adaptive dynamics and evolutionary rescue theory. *Philos. Trans. R. Soc. B-Biol. Sci.* **368**, 20120081.
- 714
- Fischer, B.B., Kwiatkowski, M., Ackermann, M., Krismer, J., Roffler, S., Suter, M.J.F., Eggen, R.I.L. & Matthews, B. (2014) Phenotypic plasticity influences the eco-evolutionary dynamics of a predator-prey system. *Ecology* **95**, 3080–3092.
- 716
- Fraser, A.S. (1957) Simulation of genetic systems by automatic digital computers. *Aust. J. Biol. Sci.* **10**, 484–491.
- 718
- Frickel, J., Sieber, M. & Becks, L. (2016) Eco-evolutionary dynamics in a coevolving host-virus system. *Ecol. Lett.* **19**, 450–459.
- 720
- Fronhofer, E.A. & Altermatt, F. (2015) Eco-evolutionary feedbacks during experimental range expansions. *Nat. Commun.* **6**, 6844.
- 722
- Fronhofer, E.A. & Altermatt, F. (2017) Classical metapopulation dynamics and eco-evolutionary feedbacks in dendritic networks. *Ecography* **40**, 1455–1466.
- 724

- 726 Fronhofer, E.A., Liebig, J., Mitesser, O. & Poethke, H.J. (in press) Eusociality outcompetes egalitarian  
and solitary strategies when resources are limited and reproduction is costly. *Ecol. Evol.*
- 728 Fronhofer, E.A., Pasurka, H., Mitesser, O. & Poethke, H.J. (2011) Scarce resources, risk-sensitivity and  
egalitarian resource sharing. *Evol. Ecol. Res.* **13**, 253–267.
- 730 Fussmann, G.F., Loreau, M. & Abrams, P.A. (2007) Eco-evolutionary dynamics of communities and  
ecosystems. *Funct. Ecol.* **21**, 465–477.
- 732 Gandon, S. & Day, T. (2009) Evolutionary epidemiology and the dynamics of adaptation. *Evolution* **63**,  
826–838.
- 734 Geritz, S.A.H., Kisdi, E., Meszina, G. & Metz, J.A.J. (1998) Evolutionarily singular strategies and the  
adaptive growth and branching of the evolutionary tree. *Evol. Ecol.* **12**, 35–57.
- 736 Gokhale, C.S. & Hauert, C. (2016) Eco-evolutionary dynamics of social dilemmas. *Theor. Popul. Biol.*  
**111**, 28–42.
- 738 Gomulkiewicz, R. & Holt, R.D. (1995) When does evolution by natural selection prevent extinction?  
*Evolution* **49**, 201–207.
- 740 Gomulkiewicz, R., Holt, R.D. & Barfield, M. (1999) The effects of density dependence and immigration  
on local adaptation and niche evolution in a black-hole sink environment. *Theor. Popul. Biol.* **55**,  
742 283–296.
- Gonzalez, A., Ronce, O., Ferriere, R. & Hochberg, M.E. (2013) Evolutionary rescue: an emerging focus  
744 at the intersection between ecology and evolution. *Philos. Trans. R. Soc. B-Biol. Sci.* **368**, 20120404.
- Grimm, V. (1999) Ten years of individual-based modelling in ecology: what have we learned and what  
746 could we learn in the future? *Ecol. Model.* **115**, 129–148.
- Guill, C. & Drossel, B. (2008) Emergence of complexity in evolving niche-model food webs. *J. Theor.*  
748 *Biol.* **251**, 108–120.
- Gyllenberg, M., Parvinen, K. & Dieckmann, U. (2002) Evolutionary suicide and evolution of dispersal in  
750 structured metapopulations. *J. Math. Biol.* **45**, 79–105.
- Haafke, J., Abou Chakra, M. & Becks, L. (2016) Eco-evolutionary feedback promotes red queen dynamics  
752 and selects for sex in predator populations. *Evolution* **70**, 641652.
- H Hairston, N.G., Ellner, S.P., Geber, M.A., Yoshida, T. & Fox, J.A. (2005) Rapid evolution and the  
754 convergence of ecological and evolutionary time. *Ecol. Lett.* **8**, 1114–1127.

- Hanski, I. (1999) *Metapopulation Ecology*. Oxford University Press, Oxford, UK.
- 756 Hanski, I. & Mononen, T. (2011) Eco-evolutionary dynamics of dispersal in spatially heterogeneous environments. *Ecol. Lett.* **14**, 1025–1034.
- 758 Hanski, I.A. (2011) Eco-evolutionary spatial dynamics in the glanville fritillary butterfly. *Proc. Natl. Acad. Sci. U. S. A.* **108**, 14397–14404.
- 760 Harrison, S. & Hastings, A. (1996) Genetic and evolutionary consequences of metapopulation structure. *Trends Ecol. Evol.* **11**, 180–183.
- 762 Hendry, A.P. (2017) *Eco-evolutionary dynamics*. Princeton University Press, Princeton, NJ, USA.
- Hendry, A.P. (this issue) A critique for eco-evolutionary dynamics. *Funct. Ecol.*
- 764 Hendry, A.P. & Kinnison, M.T. (1999) The pace of modern life: measuring rates of contemporary microevolution. *Evolution* **53**, 1637–1653.
- 766 Hillaert, J., Vandegehuchte, M.L., Hovestadt, T. & Bonte, D. (2018) Information use during movement regulates how fragmentation and loss of habitat affect body size. *Proc. R. Soc. B-Biol. Sci.*
- 768 Hiltunen, T., Hairston, N.G., Hooker, G., Jones, L.E. & Ellner, S.P. (2014) A newly discovered role of evolution in previously published consumer-resource dynamics. *Ecol. Lett.* **17**, 915–923.
- 770 Huang, W., Traulsen, A., Werner, B., Hiltunen, T. & Becks, L. (2017) Dynamical trade-offs arise from antagonistic coevolution and decrease intraspecific diversity. *Nat. Commun.* **8**, 2059.
- 772 Ito, H.C. & Ikegami, T. (2006) Food-web formation with recursive evolutionary branching. *J. Theor. Biol.* **238**, 1–10.
- 774 Jones, E.I., Ferriere, R. & Bronstein, J.L. (2009) Eco-evolutionary dynamics of mutualists and exploiters. *Am. Nat.* **174**, 780–794.
- 776 Jones, L.E. & Ellner, S.P. (2007) Effects of rapid prey evolution on predator–prey cycles. *J. Math. Biol.* **55**, 541–573.
- 778 Kisdi, E. (1999) Evolutionary branching under asymmetric competition. *J. Theor. Biol.* **19**, 149–162.
- Kovach-Orr, C. & Fussmann, G.F. (2013) Evolutionary and plastic rescue in multitrophic model communities. *Philos. Trans. R. Soc. B-Biol. Sci.* **368**, 20120084.
- 780
- Kremer, C.T. & Klausmeier, C.A. (2013) Coexistence in a variable environment: eco-evolutionary perspectives. *J. Theor. Biol.* **339**, 14–25.
- 782

- Kremer, C.T. & Klausmeier, C.A. (2017) Species packing in eco-evolutionary models of seasonally fluctuating environments. *Ecol. Lett.* **20**, 1158–1168.
- 784
- Kubisch, A., Winter, A.M. & Fronhofer, E.A. (2016) The downward spiral: eco-evolutionary feedback loops lead to the emergence of ‘elastic’ ranges. *Ecography* **39**, 261–269.
- 786
- Kylafis, G. & Loreau, M. (2008) Ecological and evolutionary consequences of niche construction for its agent. *Ecol. Lett.* **11**, 1072–1081.
- 788
- Kylafis, G. & Loreau, M. (2011) Niche construction in the light of niche theory. *Ecol. Lett.* **14**, 82–90.
- 790
- Lande, R. (2007) Expected relative fitness and the adaptive topography of fluctuating selection. *Evolution* **61**, 1835–1846.
- 792
- Lande, R., Engen, S. & Saether, B.E. (2009) An evolutionary maximum principle for density-dependent population dynamics in a fluctuating environment. *Philos. Trans. R. Soc. B-Biol. Sci.* **364**, 1511–1518.
- 794
- Lande, R. & Shannon, S. (1996) The role of genetic variation in adaptation and population persistence in a changing environment. *Evolution* **50**, 434–437.
- 796
- Legrand, D., Cote, J., Fronhofer, E.A., Holt, R.D., Ronce, O., Schtickzelle, N., Travis, J.M.J. & Clobert, J. (2017) Eco-evolutionary dynamics in fragmented landscapes. *Ecography* **40**, 9–25.
- 798
- Lehmann, L. (2008) The adaptive dynamics of niche constructing traits in spatially subdivided populations: evolving posthumous extended phenotypes. *Evolution* **62**, 549–566.
- 800
- Lehtonen, J. & Kokko, H. (2012) Positive feedback and alternative stable states in inbreeding, cooperation, sex roles and other evolutionary processes. *Philos. Trans. R. Soc. B-Biol. Sci.* **367**, 211–221.
- 802
- Leibold, M.A., Holyoak, M., Mouquet, N., Amarasekare, P., Chase, J.M., Hoopes, M.F., Holt, R.D., Shurin, J.B., Law, R., Tilman, D., Loreau, M. & Gonzalez, A. (2004) The metacommunity concept: a framework for multi-scale community ecology. *Ecol. Lett.* **7**, 601–613.
- 804
- Leibold, M.A. & Norberg, J. (2004) Biodiversity in metacommunities: Plankton as complex adaptive systems? *Limnol. Oceanogr.* **49**, 1278–1289.
- 806
- Lenormand, T. (2002) Gene flow and the limits to natural selection. *Trends Ecol. Evol.* **17**, 183–189.
- 808
- Lenski, R.E. & May, R.M. (1994) The evolution of virulence in parasites and pathogens: reconciliation between two competing hypotheses. *J. Theor. Biol.* **169**, 253–265.
- 810
- Leon, J.A. & Charlesworth, B. (1978) Ecological versions of fisher’s fundamental theorem of natural selection. *Ecology* **59**, 457–464.



- 812 Lion, S. (2018) Theoretical approaches in evolutionary ecology: Environmental feedback as a unifying  
perspective. *Am. Nat.* **191**, 21–44.
- 814 Lion, S. & Gandon, S. (2015) Evolution of spatially structured host–parasite interactions. *J. Evol. Biol.*  
**28**, 10–28.
- 816 Lion, S. & Gandon, S. (2016) Spatial evolutionary epidemiology of spreading epidemics. *Proc. R. Soc.*  
*B-Biol. Sci.* **283**, 20161170.
- 818 Lion, S. & Metz, J.A. (2018) Beyond  $R_0$  maximisation: On pathogen evolution and environmental  
dimensions. *Trends Ecol. Evol.*
- 820 Litchman, E., Klausmeier, C. & Yoshiyama, K. (2009) Contrasting size evolution in marine and freshwater  
diatoms. *Proc. Natl. Acad. Sci. U. S. A.* **106**, 2665–2670.
- 822 Lively, C.M. (2012) Feedbacks between ecology and evolution: interactions between  $\Delta N$  and  $\Delta p$  in a  
life-history model. *Evol. Ecol. Res.* **14**, 299–309.
- 824 Loeuille, N. & Leibold, M.A. (2008) Ecological consequences of evolution in plant defenses in a metacom-  
munity. *Theor. Popul. Biol.* **74**, 34–45.
- 826 Loeuille, N. & Leibold, M.A. (2014) Effects of local negative feedbacks on the evolution of species within  
metacommunities. *Ecol. Lett.* **17**, 563–573.
- 828 Luo, S. & Koelle, K. (2013) Navigating the devious course of evolution: the importance of mechanistic  
models for identifying eco-evolutionary dynamics in nature. *Am. Nat.* **181 Suppl 1**, S58–75.
- 830 Lynch, M. (1993) Evolution and extinction in response to environmental change. *Biotic interactions and  
global change* pp. 234–250.
- 832 Lynch, M. & Walsh, B. (1998) *Genetics and Analysis of Quantitative Traits*. Sinauer Associates Inc.
- MacArthur, R.H. (1962) Some generalized theorems of natural selection. *Proc. Natl. Acad. Sci. U. S. A.*  
834 **48**, 1893–1897.
- Marrow, P., Dieckmann, U. & Law, R. (1996) Evolutionary dynamics of predator-prey systems: an  
836 ecological perspective. *J. Math. Biol.* **34**, 556–578.
- Martín, P.V., Hidalgo, J., de Casas, R.R. & Muñoz, M.A. (2016) Eco-evolutionary model of rapid phe-  
838 notypic diversification in species-rich communities. *PLoS Comput. Biol.* **12**, e1005139.

- Matthews, B., De Meester, L., Jones, C.G., Ibelings, B.W., Bouma, T.J., Nuutinen, V., Van De Koppel, J.  
840 & Odling-Smee, J. (2014) Under niche construction: an operational bridge between ecology, evolution,  
and ecosystem science. *Ecol. Monogr.* **84**, 245–263.
- 842 McGill, B.J. & Brown, J.S. (2007) Evolutionary game theory and adaptive dynamics of continuous traits.  
*Annu. Rev. Ecol. Evol. Syst.* **38**, 403–435.
- 844 McPeck, M.A. (2017) The ecological dynamics of natural selection: Traits and the coevolution of com-  
munity structure. *Am. Nat.* **0**, E000–E000.
- 846 Melián, C.J., Matthews, B., de Andreazzi, C.S., Rodríguez, J.P., Harmon, L.J. & Fortuna, M.A. (2018)  
Deciphering the interdependence between ecological and evolutionary networks. *Trends Ecol. Evol.* .
- 848 Metcalf, C., Rose, K., Childs, D., Sheppard, A., Grubb, P. & Rees, M. (2008) Evolution of flowering  
decisions in a stochastic, density-dependent environment. *Proc. Natl. Acad. Sci. U. S. A.* **105**, 10466–  
850 10470.
- Metz, J.A. & Geritz, S.A. (2016) Frequency dependence 3.0: an attempt at codifying the evolutionary  
852 ecology perspective. *J. Math. Biol.* **72**, 1011–1037.
- Metz, J.A.J., Mylius, S.D. & Diekmann, O. (2008) When does evolution optimize? *Evol. Ecol. Res.* **10**,  
854 629–654.
- Metz, J.A.J., Nisbet, R.M. & Geritz, S.A.H. (1992) How should we define ‘fitness’ for general ecological  
856 scenarios? *Trends Ecol. Evol.* **7**, 198–202.
- Meyer, J.R., Ellner, S.P., Hairston, N.G., Jones, L.E. & Yoshida, T. (2006) Prey evolution on the time  
858 scale of predator–prey dynamics revealed by allele-specific quantitative pcr. *Proc. Natl. Acad. Sci. U.  
S. A.* **103**, 10690–10695.
- 860 Norberg, J., Urban, M.C., Vellend, M., Klausmeier, C.A. & Loeuille, N. (2012) Eco-evolutionary responses  
of biodiversity to climate change. *Nature Climate Change* **2**, 747–751.
- 862 Nosal, P., Funk, D.J. & Ortíz-Barrientos, D. (2009) Divergent selection and heterogeneous genomic  
divergence. *Mol. Ecol.* **18**, 375–402.
- 864 Nuismer, S.L., Otto, S.P. & Blanquart, F. (2008) When do host-parasite interactions drive the evolution  
of nonrandom mating? *Ecol. Lett.* **11**, 937–946.
- 866 Nuismer, S.L., Thompson, J.N. & Gomulkiewicz, R. (2000) Coevolutionary clines across selection mosaics.  
*Evolution* **54**, 1102–1115.

- 868 Nuismer, S.L., Thompson, J.N. & Gomulkiewicz, R. (2003) Coevolution between hosts and parasites with  
partially overlapping geographic ranges. *J. Evol. Biol.* **16**, 1337–1345.
- 870 Odling-Smee, F.J., Odling-Smee, H., Laland, K.N., Feldman, M.W. & Feldman, F. (2003) *Niche con-  
struction: the neglected process in evolution*. 37, Princeton university press.
- 872 Orr, H.A. & Unckless, R.L. (2014) The population genetics of evolutionary rescue. *PLoS Genet.* **10**,  
e1004551.
- 874 Parvinen, K. & Dieckmann, U. (2013) Self-extinction through optimizing selection. *J. Theor. Biol.* **333**,  
1–9.
- 876 Patel, S., Cortez, M.H. & Schreiber, S.J. (2018) Partitioning the effects of eco-evolutionary feedbacks on  
community stability. *Am. Nat.* **191**, 381–394.
- 878 Pease, C.M., Lande, R. & Bull, J. (1989) A model of population growth, dispersal and evolution in a  
changing environment. *Ecology* **70**, 1657–1664.
- 880 Pelletier, F., Garant, D. & Hendry, A. (2009) Eco-evolutionary dynamics. *Philos. Trans. R. Soc. B-Biol.  
Sci.* **364**, 1483–1489.
- 882 Pimentel, D. (1961) Animal population regulation by the genetic Feed-Back mechanism. *Am. Nat.* **95**,  
65–79.
- 884 Poethke, H.J., Dytham, C. & Hovestadt, T. (2011) A metapopulation paradox: partial improvement of  
habitat may reduce metapopulation persistence. *Am. Nat.* **177**, 792–799.
- 886 Poethke, H.J. & Hovestadt, T. (2002) Evolution of density- and patch-size-dependent dispersal rates.  
*Proc. R. Soc. B-Biol. Sci.* **269**, 637–645.
- 888 Poethke, H.J., Pfenning, B. & Hovestadt, T. (2007) The relative contribution of individual and kin  
selection to the evolution of density-dependent dispersal rates. *Evol. Ecol. Res.* **9**, 41–50.
- 890 Polechová, J., Barton, N. & Marion, G. (2009) Species' range: Adaptation in space and time. *Am. Nat.*  
**174**, E186—E204.
- 892 Post, D.M. & Palkovacs, E.P. (2009) Eco-evolutionary feedbacks in community and ecosystem ecology:  
interactions between the ecological theatre and the evolutionary play. *Philos. Trans. R. Soc. B-Biol.  
Sci.* **364**, 1629–1640.
- 894 Queller, D.C. (2017) Fundamental theorems of evolution. *Am. Nat.* **189**, 000–000.

- 896 Räsänen, K. & Hendry, A.P. (2008) Disentangling interactions between adaptive divergence and gene  
flow when ecology drives diversification. *Ecol. Lett.* **11**, 624–636.
- 898 Rees, M. & Ellner, S.P. (2016) Evolving integral projection models: evolutionary demography meets  
eco-evolutionary dynamics. *Methods Ecol. Evol.* **7**, 157–170.
- 900 Robertson, D.S. (1991) Feedback theory and darwinian evolution. *J. Theor. Biol.* **152**, 469–484.
- Ronce, O. (2007) How does it feel to be like a rolling stone? Ten questions about dispersal evolution.  
902 *Annu. Rev. Ecol. Evol. Syst.* **38**, 231–253.
- Rosenzweig, M.L. (1978) Competitive speciation. *Biol. J. Linnean Soc.* **10**, 275–289.
- 904 Rossberg, A.G., Matsuda, H. and Amemiya, T. & Itoh, K. (2006) Food webs: experts consuming families  
of experts. *Journal of Theoretical Biology* **241**, 552–563.
- 906 Roughgarden, J. (1979) *Theory of Population Genetics and Evolutionary Ecology: An Introduction*.  
Macmillan Publishing Co., Inc.
- 908 Rueffler, C., Egas, M. & Metz, J.A.J. (2006) Evolutionary predictions should be based on individual-level  
traits. *Am. Nat.* **168**, E148–E162.
- 910 Saastamoinen, M., Bocedi, G., Cote, J., Legrand, D., Guillaume, F., Wheat, C.W., Fronhofer, E.A.,  
Garcia, C., Henry, R., Husby, A., Baguette, M., Bonte, D., Coulon, A., Kokko, H., Matthysen, E.,  
912 Niitepld, K., Nonaka, E., Stevens, V.M., Travis, J.M.J., Donohue, K., Bullock, J.M. & del Mar Delgado,  
M. (2018) Genetics of dispersal. *Biol. Rev.* **93**, 574–599.
- 914 Sæther, B.E. & Engen, S. (2015) The concept of fitness in fluctuating environments. *Trends Ecol. Evol.*  
**30**, 273–281.
- 916 Sasaki, A. & Dieckmann, U. (2011) Oligomorphic dynamics for analyzing the quantitative genetics of  
adaptive speciation. *J. Math. Biol.* **63**, 601–635.
- 918 Schiffers, K., Bourne, E.C., Lavergne, S., Thuiller, W. & Travis, J.M. (2013) Limited evolutionary rescue  
of locally adapted populations facing climate change. *Phil. Trans. R. Soc. B* **368**, 20120083.
- 920 Schluter, D. (2000) Ecological character displacement in adaptive radiation. *Am. Nat.* **156**, S4–S16.
- Schoener, T.W. (2011) The newest synthesis: Understanding the interplay of evolutionary and ecological  
922 dynamics. *Science* **331**, 426–429.
- Schweitzer, J.A., Juric, I., Voorde, T.F., Clay, K., Putten, W.H. & Bailey, J.K. (2014) Are there evolu-  
924 tionary consequences of plant–soil feedbacks along soil gradients? *Funct. Ecol.* **28**, 55–64.

- Shefferson, R.P. & Salguero-Gómez, R. (2015) Eco-evolutionary dynamics in plants: interactive processes  
926 at overlapping time-scales and their implications. *J. Ecol.* **103**, 789–797.
- Slatkin, M. (1980) Ecological character displacement. *Ecology* **61**, 163–177.
- 928 Smallegange, I., Rhebergen, F., Van Gorkum, T., Vink, D. & Egas, M. (this issue) Around and around we  
go: understanding eco-evolutionary dynamics by studying polymorphisms and closed feedback loops.  
930 *Funct. Ecol.* .
- Takahashi, D., Brännström, Å., Mazzucco, R., Yamauchi, A. & Dieckmann, U. (2013) Abrupt community  
932 transitions and cyclic evolutionary dynamics in complex food webs. *J. Theor. Biol.* **337**, 181–189.
- Taper, M.L. & Case, T.J. (1992) Models of character displacement and the theoretical robustness of  
934 taxon cycles. *Evolution* **46**, 317–333.
- terHorst, C., Miller, T. & Powell, E. (2010) When can competition for resources lead to ecological  
936 equivalence? *Evol. Ecol. Res.* **12**, 843–854.
- terHorst, C.P. & Zee, P.C. (2016) Eco-evolutionary dynamics in plant–soil feedbacks. *Funct. Ecol.* **30**,  
938 1062–1072.
- terHorst, C.P., Zee, P.C., Heath, K.D., Miller, T.E., Pastore, A.I., Patel, S., Schreiber, S.J., Wade, M.J. &  
940 Walsh, M.R. (2018) Evolution in a community context: Trait responses to multiple species interactions.  
*Am. Nat.* **191**, 368–380.
- 942 Thibert-Plante, X. & Hendry, A. (2009) Five questions on ecological speciation addressed with individual-  
based simulations. *J. Evol. Biol.* **22**, 109–123.
- 944 Thomas, M.K., Kremer, C.T., Klausmeier, C.A. & Litchman, E. (2012) A global pattern of thermal  
adaptation in marine phytoplankton. *Science* **338**, 1083–1085.
- 946 Thompson, J.N. (2005) *The Geographic Mosaic of Coevolution*. University of Chicago Press.
- Travis, J., Leips, J. & Rodd, F.H. (2013) Evolution in population parameters: Density-dependent selection  
948 or density-dependent fitness? *Am. Nat.* **181**, S9–S20.
- Travis, J., Reznick, D., Bassar, R.D., López-Sepulcre, A., Ferriere, R. & Coulson, T. (2014) Do eco-evo  
950 feedbacks help us understand nature? answers from studies of the Trinidadian guppy. *Advances in  
Ecological Research*, vol. 50, pp. 1–40, Elsevier.
- 952 Travis, J.M.J. & Dytham, C. (1999) Habitat persistence, habitat availability and the evolution of disper-  
sal. *Proc. R. Soc. B-Biol. Sci.* **266**, 723–728.

- 954 Travis, J.M.J. & Dytham, C. (2002) Dispersal evolution during invasions. *Evol. Ecol. Res.* **4**, 1119–1129.
- Turcotte, M.M., Reznick, D.N. & Hare, J.D. (2011) The impact of rapid evolution on population dynamics  
956 in the wild: experimental test of eco-evolutionary dynamics. *Ecol. Lett.* **14**, 1084–1092.
- Uecker, H. (2017) Evolutionary rescue in randomly mating, selfing, and clonal populations. *Evolution* **71**,  
958 845–858.
- Uecker, H., Otto, S.P. & Hermisson, J. (2014) Evolutionary rescue in structured populations. *Am. Nat.*  
960 **183**, E17–E35.
- Urban, M., Leibold, M., Amarasekare, P., Demeester, L., Gomulkiewicz, R., Hochberg, M., Klausmeier,  
962 C., Loeuille, N., Demazancourt, C. & Norberg, J. (2008) The evolutionary ecology of metacommunities.  
*Trends Ecol. Evol.* **23**, 311–317.
- 964 Van Baalen, M. (1998) Coevolution of recovery ability and virulence. *Proc. R. Soc. B-Biol. Sci.* **265**,  
317–325.
- 966 Van Nuland, M.E., Ware, I.M., Bailey, J.K. & Schweitzer, J.A. (this issue) Geographic variation in  
plant evolutionary responses to soil fertility is mediated by soil microbial communities: Filling the  
968 eco-evolutionary feedback knowledge gap. *Funct. Ecol.* .
- Van Nuland, M.E., Wooliver, R.C., Pfennigwerth, A.A., Read, Q.D., Ware, I.M., Mueller, L., Fordyce,  
970 J.A., Schweitzer, J.A. & Bailey, J.K. (2016) Plant–soil feedbacks: connecting ecosystem ecology and  
evolution. *Funct. Ecol.* **30**, 1032–1042.
- 972 van Velzen, E. & Gaedke, U. (2017) Disentangling eco-evolutionary dynamics of predator-prey coevolu-  
tion: the case of antiphase cycles. *Sci. Rep.* **7**, 17125.
- 974 Vasseur, D.A., Amarasekare, P., Rudolf, V.H.W. & Levine, J.M. (2011) Eco-Evolutionary dynamics  
enable coexistence via neighbor-dependent selection. *Am. Nat.* **178**, E96–E109.
- 976 Vellend, M. (2010) Conceptual synthesis in community ecology. *Q. Rev. Biol.* **85**, 183–206.
- Ware, I., Fitzpatrick, C., Johnson, M., Palkovacs, E., Kinnison, M., Mueller, L., Bayliss, S., Beals, K.,  
978 Wooliver, R., Schweitzer, J. & Bailey, J. (this issue) Ecosystem effects of evolution: a synthesis of  
eco-evolutionary feedbacks across terrestrial and aquatic systems. *Funct. Ecol.* .
- 980 Waxman, D. & Gavrillets, S. (2005) 20 questions on adaptive dynamics. *J. Evol. Biol.* **18**, 1139–1154.
- Yamamichi, M., Yoshida, T. & Sasaki, A. (2011) Comparing the effects of rapid evolution and phenotypic  
982 plasticity on predator-prey dynamics. *Am. Nat.* **178**, 287–304.

Yoshida, T., Ellner, S.P., Jones, L.E., Bohannan, B.J., Lenski, R.E. & Hairston Jr, N.G. (2007) Cryptic  
984 population dynamics: rapid evolution masks trophic interactions. *PLoS Biol.* **5**, e235.

Yoshida, T., Jones, L.E., Ellner, S.P., Fussmann, G.F. & Hairston, N.G. (2003) Rapid evolution drives  
986 ecological dynamics in a predator-prey system. *Nature* **424**, 303–306.

## Acknowledgements

988 The authors would like to thank the editors of the special issue for bringing us together and two anonymous  
referees for very helpful comments. This is publication ISEM-YYYY-XXX of the Institut des Sciences  
990 de l'Evolution – Montpellier.

## Author's contributions

- 992 • Conceived study: Lynn Govaert, Emanuel A. Fronhofer, Blake Matthews
- 994 • Led study: Lynn Govaert, Emanuel A. Fronhofer
- 996 • Performed literature search and analysis: all authors
- 998 • Drafted the manuscript: Lynn Govaert, Emanuel A. Fronhofer, Blake Matthews
- 1000 • Contributed to revisions: all authors

## 1002 Data accessibility

All papers used for this review are cited in the text.